

# CHUK Rabbit pAb

Catalog No.: A25218

## Basic Information

### Observed MW

Refer to figures

### Calculated MW

78kDa

### Category

Primary antibody

### Applications

IF/ICC,ELISA

### Cross-Reactivity

Human, Mouse

## Background

Contributes to IkappaB kinase activity. Involved in several processes, including Rho protein signal transduction; response to cholecystokinin; and response to lipopolysaccharide. Located in cytosol and intracellular membrane-bounded organelle. Part of IkappaB kinase complex. Used to study muscular atrophy. Biomarker of colitis. Human ortholog(s) of this gene implicated in fetal encasement syndrome and prostate cancer. Orthologous to human CHUK (component of inhibitor of nuclear factor kappa B kinase complex).

## Recommended Dilutions

**IF/ICC** 1:50 - 1:200

**ELISA** Recommended starting concentration is 1 µg/mL. Please optimize the concentration based on your specific assay requirements.

## Immunogen Information

### Gene ID

309361

### Swiss Prot

G3V926

### Immunogen

Recombinant protein (or fragment). This information is considered to be commercially sensitive.

### Synonyms

Ikka; Ikbka

## Contact

☎ | 400-999-6126

✉ | [cn.market@abclonal.com.cn](mailto:cn.market@abclonal.com.cn)

🌐 | [www.abclonal.com.cn](http://www.abclonal.com.cn)

## Product Information

### Source

Rabbit

### Isotype

IgG

### Purification

Affinity purification

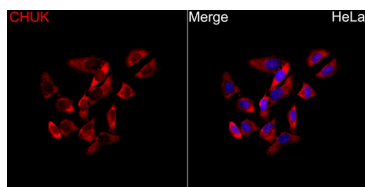
### Storage

Store at -20°C. Avoid freeze / thaw cycles.

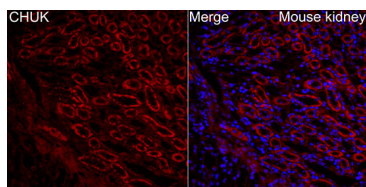
Buffer: PBS with 0.05% proclin300, 50% glycerol, pH7.3.

## Validation Data

---



Immunofluorescence analysis of HeLa cells using CHUK Rabbit pAb (A25218) at a dilution of 1:100 (40x lens). Secondary antibody: Cy3 Goat Anti-Rabbit IgG (H+L) (AS007) at 1:500 dilution. Blue: DAPI for nuclear staining.



Immunofluorescence analysis of paraffin-embedded Mouse kidney tissue using CHUK Rabbit pAb (A25218) at a dilution of 1:100 (40x lens). Secondary antibody: Cy3-conjugated Goat anti-Rabbit IgG (H+L) (AS007) at 1:500 dilution. Blue: DAPI for nuclear staining. Perform high pressure antigen retrieval with 0.01 M citrate buffer (pH 6.0) prior to IF staining.