

# CXCL9/MIG Rabbit mAb

Catalog No.: A25183 **Recombinant** **1 Publications**

## Basic Information

### Observed MW

14kDa/35kDa (Recombinant Protein)

### Calculated MW

14kDa

### Category

Primary antibody

### Applications

WB,IF/ICC,ELISA

### Cross-Reactivity

Human

### CloneNo number

ARC64297

## Background

This antimicrobial gene is part of a chemokine superfamily that encodes secreted proteins involved in immunoregulatory and inflammatory processes. The protein encoded is thought to be involved in T cell trafficking. The encoded protein binds to C-X-C motif chemokine 3 and is a chemoattractant for lymphocytes but not for neutrophils.

## Recommended Dilutions

**WB** 1:1000 - 1:4000

**IF/ICC** 1:200 - 1:800

**ELISA** Recommended starting concentration is 1 µg/mL. Please optimize the concentration based on your specific assay requirements.

## Immunogen Information

### Gene ID

4283

### Swiss Prot

Q07325

### Immunogen

Recombinant protein (or fragment). This information is considered to be commercially sensitive.

### Synonyms

CMK; MIG; Humig; SCYB9; crg-10; CXCL9

## Contact

☎ | 400-999-6126

✉ | [cn.market@abclonal.com.cn](mailto:cn.market@abclonal.com.cn)

🌐 | [www.abclonal.com.cn](http://www.abclonal.com.cn)

## Product Information

### Source

Rabbit

### Isotype

IgG

### Purification

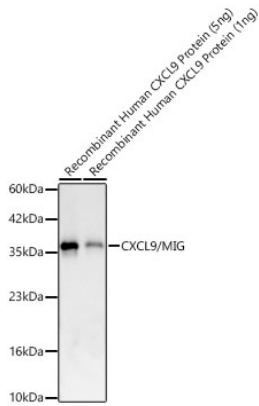
Affinity purification

### Storage

Store at -20°C. Avoid freeze / thaw cycles.

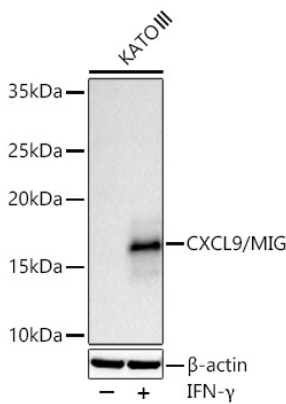
Buffer: PBS containing 50% glycerol and 0.05% BSA, preserved with proclin300 or sodium azide (as specified on the Certificate of Analysis), pH 7.3.

## Validation Data

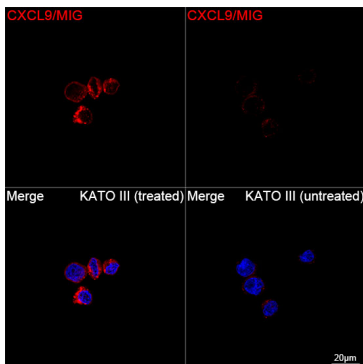


Western blot analysis of recombinant Human CXCL9 Protein using CXCL9/MIG Protein Rabbit mAb (A25183) at 1:1000 dilution.  
 Secondary antibody: HRP-conjugated Goat anti-Rabbit IgG (H+L) (AS014) at 1:10000 dilution.  
 Lysates/proteins: 5ng/1ng per lane.  
 Blocking buffer: 3% nonfat dry milk in TBST.  
 Detection: ECL Basic Kit (RM00020).

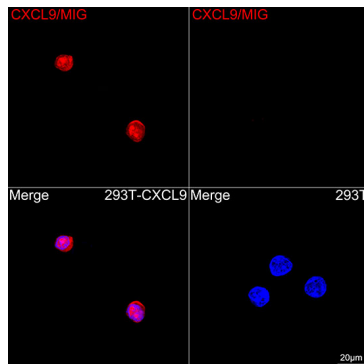
Exposure time: 30s.



Western blot analysis of lysates from KATO III cells using CXCL9/MIG Rabbit mAb (A25183) at 1:1000 dilution incubated overnight at 4°C. KATO III cells were treated by IFN- $\gamma$  (100ng/mL) at 37°C for 48 hours.  
 Secondary antibody: HRP-conjugated Goat anti-Rabbit IgG (H+L) (AS014) at 1:10000 dilution.  
 Lysates/proteins: 30  $\mu$ g per lane.  
 Blocking buffer: 3 % nonfat dry milk in TBST.  
 Detection: ECL Basic Kit (RM00020).  
 Exposure time: 45s.



Confocal imaging of KATO III cells (treated with IFN- $\gamma$  and TNF- $\alpha$ ) and KATO III cells (untreated) using CXCL9/MIG Rabbit mAb (A25183, dilution 1:200) followed by a further incubation with Cy3-conjugated Goat Anti-Rabbit IgG (H+L) (AS007, dilution 1:500) (Red). DAPI was used for nuclear staining (Blue). Objective: 100x.



Confocal imaging of 293T cells transfected with CXCL9/MIG using CXCL9/MIG Rabbit mAb (A25183, dilution 1:200) followed by a further incubation with Cy3 Goat Anti-Rabbit IgG (H+L) (AS007, dilution 1:500) (Red). DAPI was used for nuclear staining (Blue). Objective: 100x.