

PINK1 Rabbit pAb

Catalog No.: A25177

Basic Information

Observed MW

Refer to figures

Calculated MW

63kDa

Category

Primary antibody

Applications

ELISA, IF/ICC

Cross-Reactivity

Mouse

Background

This gene encodes a serine/threonine protein kinase that localizes to mitochondria. It is thought to protect cells from stress-induced mitochondrial dysfunction. Mutations in this gene cause one form of autosomal recessive early-onset Parkinson disease.

Recommended Dilutions

IF/ICC 1:50 - 1:200

Immunogen Information

Gene ID

65018

Swiss Prot

Q9BXM7

Immunogen

A synthetic peptide corresponding to a sequence within amino acids 390-490 of human PINK1(NP_115785.1).

Synonyms

BRPK; PARK6; PINK1

Contact

☎ | 400-999-6126

✉ | cn.market@abclonal.com.cn

🌐 | www.abclonal.com.cn

Product Information

Source

Rabbit

Isotype

IgG

Purification

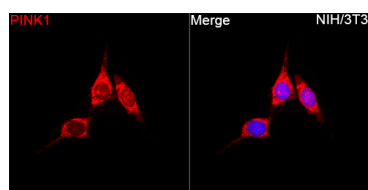
Affinity purification

Storage

Store at -20°C. Avoid freeze / thaw cycles.

Buffer: PBS with 0.05% proclin300, 50% glycerol, pH7.3.

Validation Data



Immunofluorescence analysis of NIH/3T3 cells using PINK1 Rabbit pAb(A25177) at a dilution of 1:100 (40x lens). Secondary antibody: Cy3 Goat Anti-Rabbit IgG (H+L)(AS007) at 1:500 dilution. Blue: DAPI for nuclear staining.