

ABflo® 594 Rabbit anti-Human/Monkey CD127/IL-7Rα mAb

Catalog No.: A25163

Basic Information

Observed MW

Calculated MW

52kDa

Category

Primary antibody

Applications

FC

Cross-Reactivity

Human, Cynomolgus

CloneNo number

ARC66004

Conjugate

ABflo® 594. Ex:588nm. Em:604nm.

Background

The protein encoded by this gene is a receptor for interleukin 7 (IL7). The function of this receptor requires the interleukin 2 receptor, gamma chain (IL2RG), which is a common gamma chain shared by the receptors of various cytokines, including interleukins 2, 4, 7, 9, and 15. This protein has been shown to play a critical role in V(D)J recombination during lymphocyte development. Defects in this gene may be associated with severe combined immunodeficiency (SCID). Alternatively spliced transcript variants have been found.

Recommended Dilutions

FC 5 µl per 10⁶ cells in
100 µl volume

Immunogen Information

Gene ID

3575

Swiss Prot

P16871

Immunogen

Recombinant protein (or fragment). This information is considered to be commercially sensitive.

Synonyms

ILRA; CD127; IL7RA; CDW127; IMD104; sIL-7R; Inc-IL7R; IL7Ralpha; IL-7Ralpha; IL-7R-alpha; CD127/IL7R

Contact

☎ | 400-999-6126

✉ | cn.market@abclonal.com.cn

🌐 | www.abclonal.com.cn

Product Information

Source

Rabbit

Isotype

IgG

Purification

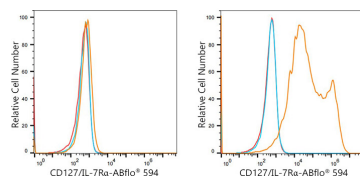
Affinity purification

Storage

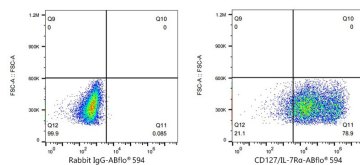
Store at 2-8°C. Avoid freeze.

Buffer: PBS containing 0.2% BSA, preserved with proclin300 or sodium azide (as specified on the Certificate of Analysis), pH 7.3.

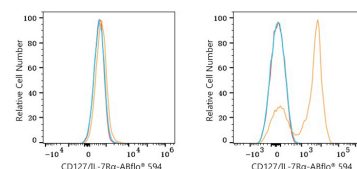
Validation Data



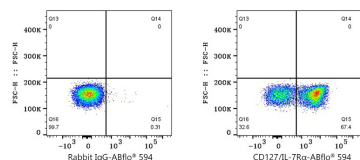
Flow cytometry: 1×10^6 293T cells (negative control, left) and 293T (Transfection, right) cells were surface-stained with ABflo® 594 Rabbit anti-Human CD127/IL-7Rα mAb (A25163, 5 μ l/Test, orange line) or ABflo® 594 Rabbit IgG isotype control (A23821, 5 μ l/Test, blue line). Non-fluorescently stained cells were used as blank control (red line).



Flow cytometry: 1×10^6 293T (Transfection) cells were surface-stained with ABflo® 594 Rabbit IgG isotype control (A23821, 5 μ l/Test, left) or ABflo® 594 Rabbit anti-Human CD127/IL-7Rα mAb (A25163, 5 μ l/Test, right).



Flow cytometry: 1×10^6 293T cells (negative control, left) and Human PBMC (right) were surface-stained with ABflo® 594 Rabbit anti-Human CD127/IL-7Rα mAb (A25163, 5 μ l/Test, orange line) or ABflo® 594 Rabbit IgG isotype control (A23821, 5 μ l/Test, blue line). Non-fluorescently stained cells were used as blank control (red line).



Flow cytometry: 1×10^6 Human PBMC were surface-stained with ABflo® 594 Rabbit IgG isotype control (A23821, 5 μ l/Test, left) or ABflo® 594 Rabbit anti-Human CD127/IL-7Rα mAb (A25163, 5 μ l/Test, right).