

# ABflo® 488 Rabbit anti-Human/Monkey CD127/IL-7Rα mAb

Catalog No.: A25161

## Basic Information

### Observed MW

### Calculated MW

52kDa

### Category

Primary antibody

### Applications

FC

### Cross-Reactivity

Human, Cynomolgus

### CloneNo number

ARC66004

### Conjugate

ABflo® 488. Ex:491nm. Em:516nm.

## Recommended Dilutions

FC 5 µl per 10<sup>6</sup> cells in  
100 µl volume

## Background

The protein encoded by this gene is a receptor for interleukin 7 (IL7). The function of this receptor requires the interleukin 2 receptor, gamma chain (IL2RG), which is a common gamma chain shared by the receptors of various cytokines, including interleukins 2, 4, 7, 9, and 15. This protein has been shown to play a critical role in V(D)J recombination during lymphocyte development. Defects in this gene may be associated with severe combined immunodeficiency (SCID). Alternatively spliced transcript variants have been found.

## Immunogen Information

### Gene ID

Hu 3575 Cyon 102143679

### Swiss Prot

P16871

### Immunogen

Recombinant protein (or fragment). This information is considered to be commercially sensitive.

### Synonyms

ILRA; CD127; IL7RA; CDW127; IMD104; sIL-7R; Inc-IL7R; IL7Ralpha; IL-7Ralpha; IL-7R-alpha; CD127/IL7R

## Contact

☎ | 400-999-6126

✉ | [cn.market@abclonal.com.cn](mailto:cn.market@abclonal.com.cn)

🌐 | [www.abclonal.com.cn](http://www.abclonal.com.cn)

## Product Information

### Source

Rabbit

### Isotype

IgG

### Purification

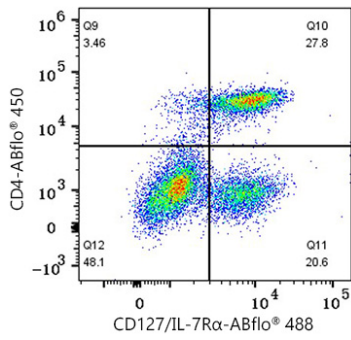
Affinity purification

### Storage

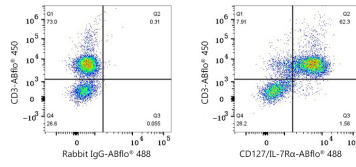
Store at 2-8°C. Avoid freeze.

Buffer: PBS containing 0.2% BSA, preserved with proclin300 or sodium azide (as specified on the Certificate of Analysis), pH 7.3.

## Validation Data



Flow cytometry:  $1 \times 10^6$  Cynomolgus peripheral blood mononuclear cells were surface-stained with ABflo® 450 Rabbit anti-Human/Monkey CD4 mAb (A26523, 5  $\mu$ l/Test) and ABflo® 488 Rabbit anti-Human/Monkey CD127/IL-7R mAb (A25161, 5  $\mu$ l/Test, right). Cells in the lymphocyte gate were used for analysis.



Flow cytometry:  $1 \times 10^6$  Human PBMC were surface-stained with ABflo® 450 Rabbit anti-Human/Monkey CD3 mAb (A27177, 5  $\mu$ l/Test) and ABflo® 488 Rabbit IgG isotype control (A22069, 5  $\mu$ l/Test, left) or ABflo® 488 Rabbit anti-Human CD127/IL-7R mAb (A25161, 5  $\mu$ l/Test, right). Cells in the lymphocyte gate were used for analysis.