

# ABflo® 594 Rabbit anti-Rat CD31/PECAM1 mAb

Catalog No.: A25154

## Basic Information

### Observed MW

### Calculated MW

76kDa

### Category

Primary antibody

### Applications

FC

### Cross-Reactivity

Rat

### CloneNo number

ARC64727

### Conjugate

ABflo® 594. Ex:588nm. Em:604nm.

## Recommended Dilutions

FC 5 µl per 10<sup>6</sup> cells in  
100 µl volume

## Background

Enables protein phosphatase binding activity. Involved in several processes, including cellular response to interferon-gamma; negative regulation of GTPase activity; and negative regulation of actin filament polymerization. Located in cell surface and ruffle. Used to study pulmonary hypertension. Biomarker of bacterial pneumonia; orchitis; and osteoarthritis. Human ortholog(s) of this gene implicated in coronary artery disease (multiple); lung non-small cell carcinoma; neuroblastoma; and psoriatic arthritis. Orthologous to human PECAM1 (platelet and endothelial cell adhesion molecule 1).

## Immunogen Information

### Gene ID

29583

### Swiss Prot

Q3SWT0

### Immunogen

Recombinant protein (or fragment). This information is considered to be commercially sensitive.

### Synonyms

CD31; Pecam; CD31/PECAM1

## Contact

☎ | 400-999-6126

✉ | [cn.market@abclonal.com.cn](mailto:cn.market@abclonal.com.cn)

🌐 | [www.abclonal.com.cn](http://www.abclonal.com.cn)

## Product Information

### Source

Rabbit

### Isotype

IgG

### Purification

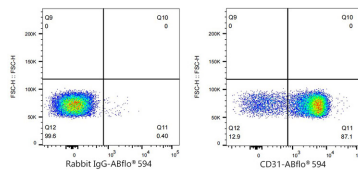
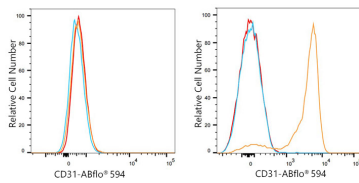
Affinity purification

### Storage

Store at 2-8°C. Avoid freeze.

Buffer: PBS containing 0.2% BSA, preserved with proclin300 or sodium azide (as specified on the Certificate of Analysis), pH 7.3.

## Validation Data



Flow cytometry:  $1 \times 10^6$  PC-12 cells (negative control, left) and Rat Splenocytes (right) were surface-stained with ABflo® 594 Rabbit anti-Rat CD31 mAb (A25154, 5  $\mu$ l/Test, orange line) or ABflo® 594 Rabbit IgG isotype control (A23821, 5  $\mu$ l/Test, blue line). Non-fluorescently stained cells were used as blank control (red line).

Flow cytometry:  $1 \times 10^6$  Rat Splenocytes were surface-stained with ABflo® 594 Rabbit IgG isotype control (A23821, 5  $\mu$ l/Test, left) or ABflo® 594 Rabbit anti-Rat CD31 mAb (A25154, 5  $\mu$ l/Test, right).