

CD177 Rabbit mAb

Catalog No.: A25146 **Recombinant**

Basic Information

Observed MW

Calculated MW

15kDa/27kDa/46kDa

Category

Primary antibody

Applications

FC,ELISA

Cross-Reactivity

Human

CloneNo number

ARC62693

Background

This gene encodes a glycosyl-phosphatidylinositol (GPI)-linked cell surface glycoprotein that plays a role in neutrophil activation. The protein can bind platelet endothelial cell adhesion molecule-1 and function in neutrophil transmigration. Mutations in this gene are associated with myeloproliferative diseases. Over-expression of this gene has been found in patients with polycythemia rubra vera. Autoantibodies against the protein may result in pulmonary transfusion reactions, and it may be involved in Wegener's granulomatosis. A related pseudogene, which is adjacent to this gene on chromosome 19, has been identified.

Recommended Dilutions

FC 1:100 - 1:500

ELISA Recommended starting concentration is 1 µg/mL. Please optimize the concentration based on your specific assay requirements.

Immunogen Information

Gene ID

57126

Swiss Prot

Q8N6Q3

Immunogen

Recombinant protein (or fragment). This information is considered to be commercially sensitive.

Synonyms

CD177; HNA-2a; HNA2A; NB1; NB1 GP; PRV-1; PRV1; NB1GP; CD177 antigen

Contact

☎ | 400-999-6126

✉ | cn.market@abclonal.com.cn

🌐 | www.abclonal.com.cn

Product Information

Source

Rabbit

Isotype

IgG

Purification

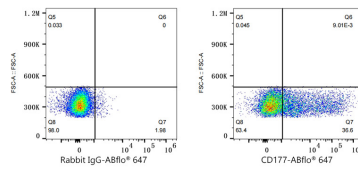
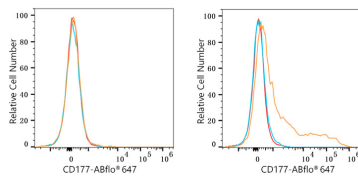
Affinity purification

Storage

Store at -20°C. Avoid freeze / thaw cycles.

Buffer: PBS containing 50% glycerol and 0.05% BSA, preserved with proclin300 or sodium azide (as specified on the Certificate of Analysis), pH 7.3.

Validation Data



Flow cytometry: 1×10^6 T-47D cells (negative control, left) and RPMI 8226 cells (right) were surface-stained with CD177 Rabbit mAb (A25146, 2 $\mu\text{g}/\text{mL}$, orange line) or ABflo® 647 Rabbit IgG isotype control (A22070, 5 $\mu\text{l}/\text{Test}$, blue line), followed by Alexa Fluor® 647 conjugated goat anti-rabbit pAb staining. Non-fluorescently stained cells were used as blank control (red line).

Flow cytometry: 1×10^6 RPMI 8226 cells were surface-stained with ABflo® 647 Rabbit IgG isotype control (A22070, 5 $\mu\text{l}/\text{Test}$, left) or CD177 Rabbit mAb (A25146, 2 $\mu\text{g}/\text{mL}$, right).