

CD80 Rabbit mAb

Catalog No.: A25138 **Recombinant** **1 Publications**

Basic Information

Observed MW

50-75kDa

Calculated MW

18kDa/29kDa/33kDa

Category

Primary antibody

Applications

WB,FC,ELISA

Cross-Reactivity

Human

CloneNo number

ARC61136

Background

The protein encoded by this gene is a membrane receptor that is activated by the binding of CD28 or CTLA-4. The activated protein induces T-cell proliferation and cytokine production. This protein can act as a receptor for adenovirus subgroup B and may play a role in lupus neuropathy.

Recommended Dilutions

WB 1:1000 - 1:5000

FC 1:500 - 1:1000

ELISA Recommended starting concentration is 1 µg/mL. Please optimize the concentration based on your specific assay requirements.

Immunogen Information

Gene ID

941

Swiss Prot

P33681

Immunogen

Recombinant protein (or fragment). This information is considered to be commercially sensitive.

Synonyms

CD80; B7; B7-1; B7.1; BB1; CD28LG; CD28LG1; LAB7; CD80 molecule

Contact

☎ | 400-999-6126

✉ | cn.market@abclonal.com.cn

🌐 | www.abclonal.com.cn

Product Information

Source

Rabbit

Isotype

IgG

Purification

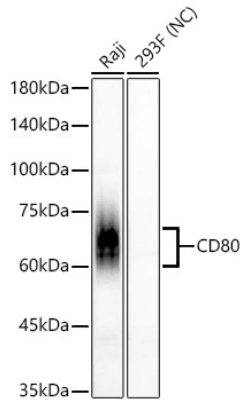
Affinity purification

Storage

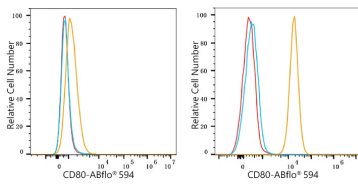
Store at -20°C. Avoid freeze / thaw cycles.

Buffer: PBS containing 50% glycerol and 0.05% BSA, preserved with proclin300 or sodium azide (as specified on the Certificate of Analysis), pH 7.3.

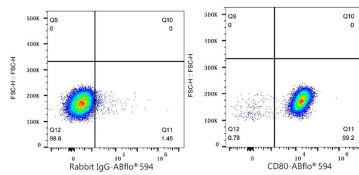
Validation Data



Western blot analysis of various lysates using CD80 Rabbit mAb (A25138) at 1:1000 dilution. Secondary antibody: HRP-conjugated Goat anti-Rabbit IgG (H+L) (AS014) at 1:10000 dilution. Lysates/proteins: 25 µg per lane. Blocking buffer: 3% nonfat dry milk in TBST. Detection: ECL Basic Kit (RM00020). Negative control (NC): 293F. Exposure time: 90s.



Flow cytometry: 1×10^6 293F cells (negative control, left) and Raji cells (right) were surface-stained with CD80 Rabbit mAb (A25138, 2 µg/mL, orange line) or ABflo® 594 Rabbit IgG isotype control (A23821, 5 µg/mL, blue line), followed by ABflo® 594-conjugated Goat Anti-Rabbit IgG (H+L) staining. Non-fluorescently stained cells were used as blank control (red line).



Flow cytometry: 1×10^6 Raji cells were surface-stained with ABflo® 594 Rabbit IgG isotype control (A23821, 5 µg/mL, left) or CD80 Rabbit mAb (A25138, 2 µg/mL, right).