

[KD Validated] TIMM13 Rabbit mAb

Catalog No.: A25135 **Recombinant**

Basic Information

Observed MW

11kDa

Calculated MW

11kDa

Category

Primary antibody

Applications

WB, IF/ICC, ELISA

Cross-Reactivity

Human

CloneNo number

ARC65133

Background

This gene encodes a member of the evolutionarily conserved TIMM (translocase of inner mitochondrial membrane) family of proteins that function as chaperones in the import of proteins from the cytoplasm into the mitochondrial inner membrane. Proteins of this family play a role in collecting substrate proteins from the translocase of the outer mitochondrial membrane (TOM) complex and delivering them to either the sorting and assembly machinery in the outer mitochondrial membrane (SAM) complex or the TIMM22 complex in the inner mitochondrial membrane. The encoded protein and the translocase of mitochondrial inner membrane 8a protein form a 70 kDa complex in the intermembrane space.

Recommended Dilutions

WB 1:500 - 1:1000**IF/ICC** 1:50 - 1:200

ELISA Recommended starting concentration is 1 µg/mL. Please optimize the concentration based on your specific assay requirements.

Immunogen Information

Gene ID

26517

Swiss Prot

Q9Y5L4

Immunogen

Recombinant protein (or fragment). This information is considered to be commercially sensitive.

Synonyms

TWIST1; ACS3; BPES2; BPES3; CRS; CRS1; CSO; SCS; TWIST; bHLHa38; twist-related protein 1

Contact

 | 400-999-6126 | cn.market@abclonal.com.cn | www.abclonal.com.cn

Product Information

Source

Rabbit

Isotype

IgG

Purification

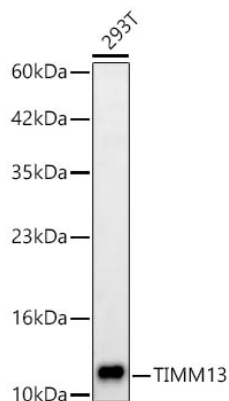
Affinity purification

Storage

Store at -20°C. Avoid freeze / thaw cycles.

Buffer: PBS containing 50% glycerol and 0.05% BSA, preserved with proclin300 or sodium azide (as specified on the Certificate of Analysis), pH 7.3.

Validation Data



Western blot analysis of lysates from 293T cells using [KD Validated] TIMM13 Rabbit mAb (A25135) at 1:1000 dilution.

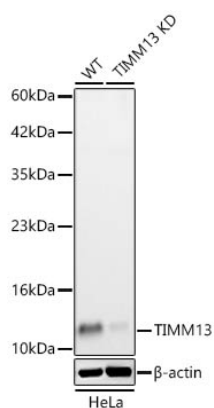
Secondary antibody: HRP-conjugated Goat anti-Rabbit IgG (H+L) (AS014) at 1:10000 dilution.

Lysates/proteins: 25 µg per lane.

Blocking buffer: 3% nonfat dry milk in TBST.

Detection: ECL Basic Kit (RM00020).

Exposure time: 90s.



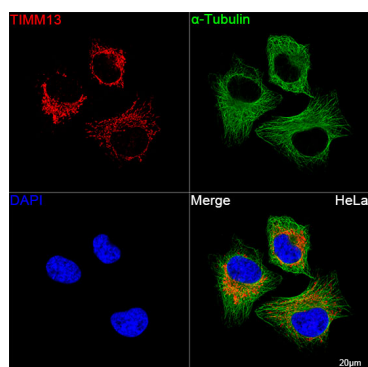
Western blot analysis of lysates from wild type (WT) and TIMM13 knockdown (KD) HeLa cells using [KD Validated] TIMM13 Rabbit mAb (A25135) at 1:1000 dilution.

Secondary antibody: HRP-conjugated Goat anti-Rabbit IgG (H+L) (AS014) at 1:10000 dilution. Lysates/proteins: 25 µg per lane.

Blocking buffer: 3% nonfat dry milk in TBST.

Detection: ECL Basic Kit (RM00020).

Exposure time: 90s.



Confocal imaging of HeLa cells using [KD Validated] TIMM13 Rabbit mAb (A25135, dilution 1:200) followed by a further incubation with Cy3 Goat Anti-Rabbit IgG (H+L) (AS007, dilution 1:500) (Red). The cells were counterstained with α-Tubulin Mouse mAb (AC012, dilution 1:400) followed by incubation with ABflo® 488-conjugated Goat Anti-Mouse IgG (H+L) Ab (AS076, dilution 1:500) (Green). DAPI was used for nuclear staining (Blue). Objective: 100x.