

FHL5 Rabbit mAb

Catalog No.: A25133 **Recombinant**

Basic Information

Observed MW

35 kDa

Calculated MW

33 kDa

Category

Primary antibody

Applications

WB,IF/ICC,IP,ELISA

Cross-Reactivity

Human, Mouse

CloneNo number

ARC63031

Background

The protein encoded by this gene is coordinately expressed with activator of cAMP-responsive element modulator (CREM). It is associated with CREM and confers a powerful transcriptional activation function. CREM acts as a transcription factor essential for the differentiation of spermatids into mature spermatozoa. There are multiple polyadenylation sites found in this gene. Polymorphisms in this gene may be associated with susceptibility for migraine headaches. Alternative splicing results in multiple transcript variants encoding the same protein.

Recommended Dilutions

WB 1:1000 - 1:5000

IF/ICC 1:50 - 1:200

IP 0.5µg-4µg antibody for
200µg-400µg extracts of
whole cells

ELISA Recommended starting
concentration is 1 µg/mL.
Please optimize the
concentration based on
your specific assay
requirements.

Immunogen Information

Gene ID

9457

Swiss Prot

Q5TD97

Immunogen

Recombinant protein (or fragment). This information is considered to be commercially sensitive.

Synonyms

ACT; FHL-5; dj393D12.2; 1700027G07Rik; FHL5

Contact

☎ | 400-999-6126

✉ | cn.market@abclonal.com.cn

🌐 | www.abclonal.com.cn

Product Information

Source

Rabbit

Isotype

IgG

Purification

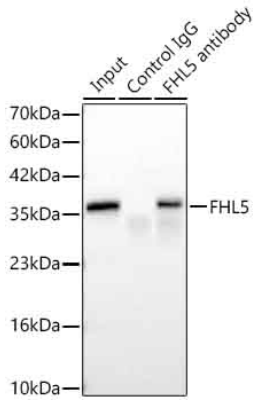
Affinity purification

Storage

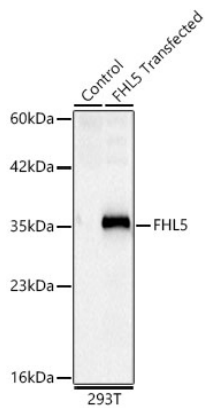
Store at -20°C. Avoid freeze / thaw cycles.

Buffer: PBS containing 50% glycerol and 0.05% BSA, preserved with proclin300 or sodium azide (as specified on the Certificate of Analysis), pH 7.3.

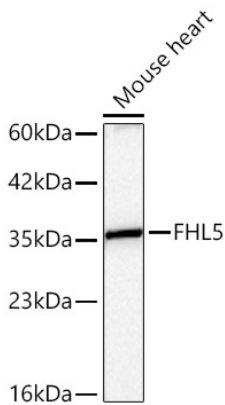
Validation Data



Immunoprecipitation of FHL5 in 300 µg extracts from 293T cells transfected with FHL5, using 3 µg FHL5 Rabbit mAb (A25133). Western blot analysis was performed using FHL5 Rabbit mAb (A25133) at 1:3000 dilution.

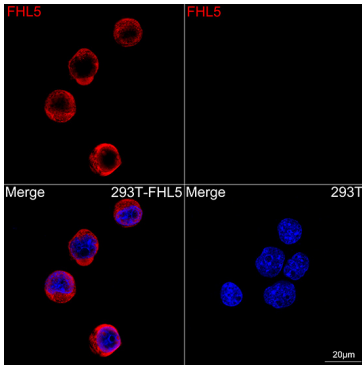


Western blot analysis of lysates from wild type (WT) and 293T cells transfected with FHL5 using FHL5 Rabbit mAb (A25133) at 1:4000 dilution incubated overnight at 4°C. Secondary antibody: HRP-conjugated Goat anti-Rabbit IgG (H+L) (AS014) at 1:10000 dilution. Lysates/proteins: 25 µg per lane. Blocking buffer: 3% nonfat dry milk in TBST. Detection: ECL Basic Kit (RM00020). Exposure time: 5 s.



Western blot analysis of lysates from Mouse heart using FHL5 Rabbit mAb (A25133) at 1:4000 dilution incubated overnight at 4°C. Secondary antibody: HRP-conjugated Goat anti-Rabbit IgG (H+L) (AS014) at 1:10000 dilution. Lysates/proteins: 25 µg per lane. Blocking buffer: 3% nonfat dry milk in TBST. Detection: ECL Basic Kit (RM00020). Exposure time: 45 s.

Validation Data



Confocal imaging of 293T cells transfected with FHL5 using FHL5 Rabbit mAb (A25133, dilution 1:200) followed by a further incubation with Cy3 Goat Anti-Rabbit IgG (H+L) (AS007, dilution 1:500) (Red). DAPI was used for nuclear staining (Blue). Objective: 100x.