

Tau Mouse mAb

Catalog No.: A25127

Basic Information

Observed MW

Refer to figures

Calculated MW

79kDa

Category

Primary antibody

Applications

IF/ICC,ELISA

Cross-Reactivity

Human, Mouse

CloneNo number

AMC0633

Background

This gene encodes the microtubule-associated protein tau (MAPT) whose transcript undergoes complex, regulated alternative splicing, giving rise to several mRNA species. MAPT transcripts are differentially expressed in the nervous system, depending on stage of neuronal maturation and neuron type. MAPT gene mutations have been associated with several neurodegenerative disorders such as Alzheimer's disease, Pick's disease, frontotemporal dementia, cortico-basal degeneration and progressive supranuclear palsy.

Recommended Dilutions

IF/ICC 1:50 - 1:200

ELISA Recommended starting concentration is 1 µg/mL. Please optimize the concentration based on your specific assay requirements.

Immunogen Information

Gene ID

4137

Swiss Prot

P10636

Immunogen

Recombinant protein (or fragment). This information is considered to be commercially sensitive.

Synonyms

TAU; MSTD; PPND; DDPAC; MAPTL; MTBT1; MTBT2; tau-40; FTDP-17; PPP1R103; Tau-PHF6; Tau

Contact

☎ | 400-999-6126

✉ | cn.market@abclonal.com.cn

🌐 | www.abclonal.com.cn

Product Information

Source

Mouse

Isotype

IgG

Purification

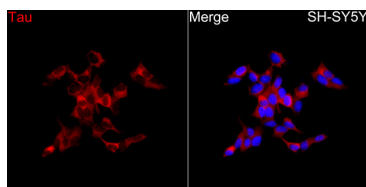
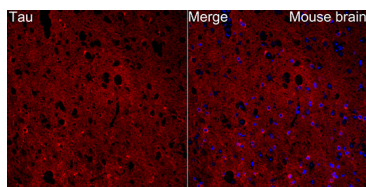
Affinity purification

Storage

Store at -20°C. Avoid freeze / thaw cycles.

Buffer: PBS containing 50% glycerol, preserved with proclin300 or sodium azide (as specified on the Certificate of Analysis), pH 7.3.

Validation Data



Immunofluorescence analysis of Mouse brain tissue using Tau Mouse mAb (A25127) at a dilution of 1:100 (40x lens). Secondary antibody: Cy3-conjugated Goat anti-Rabbit IgG (H+L)(AS007) at 1:500 dilution. Blue: DAPI for nuclear staining. Microwave antigen retrieval performed with 0.01M Citrate Buffer (pH 6.0) prior to IF staining.

Immunofluorescence analysis of SH-SY5Y cells using Tau Mouse mAb (A25127) at a dilution of 1:100 (40x lens). Secondary antibody: Cy3-conjugated Goat anti-Rabbit IgG (H+L)(AS007) at 1:500 dilution. Blue: DAPI for nuclear staining.