

# RPE65 Rabbit pAb

**Catalog No.: A25105**

## Basic Information

**Observed MW**

66kDa

**Calculated MW**

61kDa

**Category**

Primary antibody

**Applications**

WB, ELISA

**Cross-Reactivity**

Mouse

## Background

The protein encoded by this gene is a component of the vitamin A visual cycle of the retina which supplies the 11-cis retinal chromophore of the photoreceptors opsin visual pigments. It is a member of the carotenoid cleavage oxygenase superfamily. All members of this superfamily are non-heme iron oxygenases with a seven-bladed propeller fold and oxidatively cleave carotenoid carbon:carbon double bonds. However, the protein encoded by this gene has acquired a divergent function that involves the concerted O-alkyl ester cleavage of its all-trans retinyl ester substrate and all-trans to 11-cis double bond isomerization of the retinyl moiety. As such, it performs the essential enzymatic isomerization step in the synthesis of 11-cis retinal. Mutations in this gene are associated with early-onset severe blinding disorders such as Leber congenital.

## Recommended Dilutions

**WB** 1:500 - 1:1000**ELISA** Recommended starting concentration is 1 µg/mL. Please optimize the concentration based on your specific assay requirements.

## Immunogen Information

**Gene ID**

6121

**Swiss Prot**

Q16518

**Immunogen**

Recombinant protein (or fragment). This information is considered to be commercially sensitive.

**Synonyms**

p63; BCO3; LCA2; RP20; rd12; mRPE65; sRPE65; RPE65

## Contact

 | 400-999-6126 | [cn.market@abclonal.com.cn](mailto:cn.market@abclonal.com.cn) | [www.abclonal.com.cn](http://www.abclonal.com.cn)

## Product Information

**Source**

Rabbit

**Isotype**

IgG

**Purification**

Affinity purification

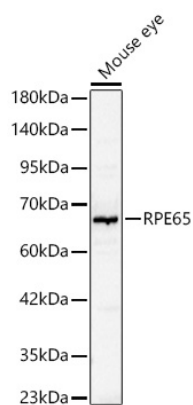
**Storage**

Store at -20°C. Avoid freeze / thaw cycles.

Buffer: PBS containing 50% glycerol, preserved with proclin300 or sodium azide (as specified on the Certificate of Analysis), pH 7.3.

## Validation Data

---



Western blot analysis of lysates from Mouse eye using RPE65 Rabbit pAb (A25105) at 1:1000 dilution.  
Secondary antibody: HRP-conjugated Goat anti-Rabbit IgG (H+L) (AS014) at 1:10000 dilution.  
Lysates/proteins: 25 µg per lane.  
Blocking buffer: 3% nonfat dry milk in TBST.  
Detection: ECL Basic Kit (RM00020).  
Exposure time: 1s.