

PE Mouse anti-Human CD3 mAb

Catalog No.: A25083 **1 Publications**

Basic Information

Observed MW

Calculated MW
23kDa

Category
Primary antibody

Applications
FC

Cross-Reactivity
Human

CloneNo number
AMC50002

Conjugate
PE. Ex:565nm. Em:574nm.

Recommended Dilutions

FC 5 μ l per 10^6 cells in
100 μ l volume

Background

The protein encoded by this gene is the CD3-epsilon polypeptide, which together with CD3-gamma, -delta and -zeta, and the T-cell receptor alpha/beta and gamma/delta heterodimers, forms the T-cell receptor-CD3 complex. This complex plays an important role in coupling antigen recognition to several intracellular signal-transduction pathways. The genes encoding the epsilon, gamma and delta polypeptides are located in the same cluster on chromosome 11. The epsilon polypeptide plays an essential role in T-cell development. Defects in this gene cause immunodeficiency. This gene has also been linked to a susceptibility to type I diabetes in women.

Immunogen Information

Gene ID 916
Swiss Prot P07766

Immunogen

Recombinant protein (or fragment). This information is considered to be commercially sensitive.

Synonyms

T3E; TCRE; IMD18; CD3epsilon

Contact

 | 400-999-6126

 | cn.market@abclonal.com.cn

 | www.abclonal.com.cn

Product Information

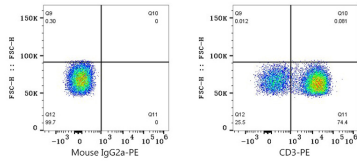
Source Mouse
Isotype mouse IgG2a
Purification Affinity purification

Storage

Store at 2-8°C. Avoid freeze.

Buffer: PBS, preserved with proclin300 or sodium azide (as specified on the Certificate of Analysis), pH 7.3.

Validation Data



Flow cytometry: 1×10^6 Human PBMC were surface-stained with PE Mouse IgG 2a isotype control (A22881, 5 μ l/Test, left) or PE Mouse anti-Human CD3 mAb (A25083, 5 μ l/Test, right). Cells in the lymphocyte gate were used for analysis.