

# APC Mouse anti-Human CD3 mAb

Catalog No.: A25082

## Basic Information

### Observed MW

### Calculated MW

23kDa

### Category

Primary antibody

### Applications

FC

### Cross-Reactivity

Human

### CloneNo number

AMC50002

### Conjugate

APC. Ex:650nm. Em:660nm.

## Background

The protein encoded by this gene is the CD3-epsilon polypeptide, which together with CD3-gamma, -delta and -zeta, and the T-cell receptor alpha/beta and gamma/delta heterodimers, forms the T-cell receptor-CD3 complex. This complex plays an important role in coupling antigen recognition to several intracellular signal-transduction pathways. The genes encoding the epsilon, gamma and delta polypeptides are located in the same cluster on chromosome 11. The epsilon polypeptide plays an essential role in T-cell development. Defects in this gene cause immunodeficiency. This gene has also been linked to a susceptibility to type I diabetes in women.

## Recommended Dilutions

FC 5 µl per 10<sup>6</sup> cells in  
100 µl volume

## Immunogen Information

### Gene ID

916

### Swiss Prot

P07766

### Immunogen

Recombinant protein (or fragment). This information is considered to be commercially sensitive.

### Synonyms

T3E; TCRE; IMD18; CD3epsilon

## Contact

☎ | 400-999-6126

✉ | [cn.market@abclonal.com.cn](mailto:cn.market@abclonal.com.cn)

🌐 | [www.abclonal.com.cn](http://www.abclonal.com.cn)

## Product Information

### Source

Mouse

### Isotype

mouse IgG2a

### Purification

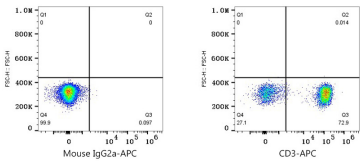
Affinity purification

### Storage

Store at 2-8°C. Avoid freeze.

Buffer: PBS with 0.09% sodium azide, 0.2% BSA, pH7.3.

# Validation Data



Flow cytometry: 1X10<sup>6</sup> Human PBMC were surface-stained with APC Mouse IgG2a isotype control (A26377,5 µl/Test,left) or APC Mouse anti-Human CD3 mAb (A25082,5 µl/Test,right). Cells in the lymphocyte gate were used for analysis.