

ABflo® 594 Rabbit anti-Human/Monkey HLA-DR mAb

Catalog No.: A25081

Basic Information

Observed MW

Calculated MW

29kDa

Category

Primary antibody

Applications

FC

Cross-Reactivity

Human, Cynomolgus

CloneNo number

ARC5141-01

Conjugate

ABflo® 594. Ex:588nm. Em:604nm.

Recommended Dilutions

FC 5 µl per 10⁶ cells in
100 µl volume

Background

HLA-DRA is one of the HLA class II alpha chain paralogues. This class II molecule is a heterodimer consisting of an alpha and a beta chain, both anchored in the membrane. This molecule is expressed on the surface of various antigen presenting cells such as B lymphocytes, dendritic cells, and monocytes/macrophages, and plays a central role in the immune system and response by presenting peptides derived from extracellular proteins, in particular, pathogen-derived peptides to T cells. The alpha chain is approximately 33-35 kDa and its gene contains 5 exons. Exon 1 encodes the leader peptide, exons 2 and 3 encode the two extracellular domains, and exon 4 encodes the transmembrane domain and the cytoplasmic tail. DRA does not have polymorphisms in the peptide binding part and acts as the sole alpha chain for DRB1, DRB3, DRB4 and DRB5.

Immunogen Information

Gene ID

3122

Swiss Prot

P01903

Immunogen

Recombinant protein (or fragment). This information is considered to be commercially sensitive.

Synonyms

HLA-DRA1

Contact

☎ | 400-999-6126

✉ | cn.market@abclonal.com.cn

🌐 | www.abclonal.com.cn

Product Information

Source

Rabbit

Isotype

IgG

Purification

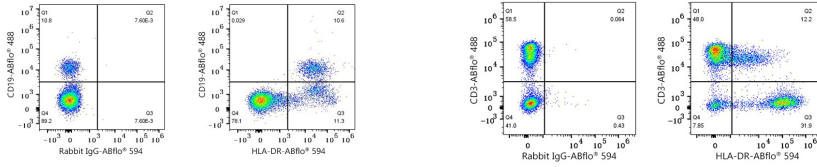
Affinity purification

Storage

Store at 2-8°C. Avoid freeze.

Buffer: PBS containing 0.2% BSA, preserved with proclin300 or sodium azide (as specified on the Certificate of Analysis), pH 7.3.

Validation Data



Flow cytometry: 1×10^6 Human PBMC were surface-stained with ABflo® 488 Rabbit anti-Human/Monkey CD19 mAb (A23008,5 μ l/Test) and ABflo® 594 Rabbit IgG isotype control (A23821,5 μ l/Test,left) or ABflo® 594 Rabbit anti-Human/Monkey HLA-DR mAb (A25081,5 μ l/Test,right). Cells in the lymphocyte gate were used for analysis.

Flow cytometry: 1×10^6 Cynomolgus peripheral blood mononuclear cells were surface-stained with ABflo® 488 Rabbit anti-Human/Monkey CD3 mAb (A26283,5 μ l/Test) and ABflo® 594 Rabbit IgG isotype control (A23821,5 μ l/Test,left) or ABflo® 594 Rabbit anti-Human/Monkey HLA-DR mAb (A25081,5 μ l/Test,right). Cells in the lymphocyte gate were used for analysis.