

# ABflo® 647 Rabbit anti-Human/Monkey HLA-DR mAb

Catalog No.: A25080

## Basic Information

### Observed MW

### Calculated MW

29kDa

### Category

Primary antibody

### Applications

FC

### Cross-Reactivity

Human, Cynomolgus

### CloneNo number

ARC5141-01

### Conjugate

ABflo® 647. Ex:648nm. Em:664nm.

## Recommended Dilutions

FC 5 µl per 10<sup>6</sup> cells in  
100 µl volume

## Background

HLA-DRA is one of the HLA class II alpha chain paralogues. This class II molecule is a heterodimer consisting of an alpha and a beta chain, both anchored in the membrane. This molecule is expressed on the surface of various antigen presenting cells such as B lymphocytes, dendritic cells, and monocytes/macrophages, and plays a central role in the immune system and response by presenting peptides derived from extracellular proteins, in particular, pathogen-derived peptides to T cells. The alpha chain is approximately 33-35 kDa and its gene contains 5 exons. Exon 1 encodes the leader peptide, exons 2 and 3 encode the two extracellular domains, and exon 4 encodes the transmembrane domain and the cytoplasmic tail. DRA does not have polymorphisms in the peptide binding part and acts as the sole alpha chain for DRB1, DRB3, DRB4 and DRB5.

## Immunogen Information

### Gene ID

3122

### Swiss Prot

P01903

### Immunogen

Recombinant protein (or fragment). This information is considered to be commercially sensitive.

### Synonyms

HLA-DRA1

## Contact

☎ | 400-999-6126

✉ | [cn.market@abclonal.com.cn](mailto:cn.market@abclonal.com.cn)

🌐 | [www.abclonal.com.cn](http://www.abclonal.com.cn)

## Product Information

### Source

Rabbit

### Isotype

IgG

### Purification

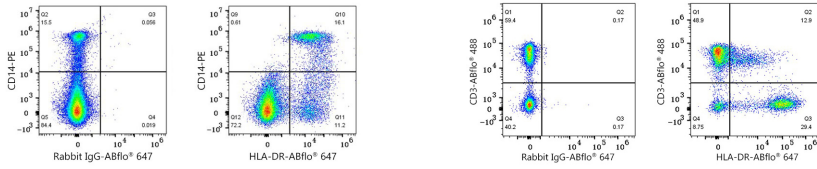
Affinity purification

### Storage

Store at 2-8°C. Avoid freeze.

Buffer: PBS containing 0.2% BSA, preserved with proclin300 or sodium azide (as specified on the Certificate of Analysis), pH 7.3.

## Validation Data



Flow cytometry:  $1 \times 10^6$  Human PBMC were surface-stained with PE Rabbit anti-Human/Monkey CD14 mAb (A25938,5  $\mu\text{l}/\text{Test}$ ) and ABflo® 647 Rabbit IgG isotype control (A22070,5  $\mu\text{l}/\text{Test}$ ,left) or ABflo® 647 Rabbit anti-Human/Monkey HLA-DR mAb (A25080,5  $\mu\text{l}/\text{Test}$ ,right). Cells in the lymphocyte and monocyte gate were used for analysis.

Flow cytometry:  $1 \times 10^6$  Cynomolgus peripheral blood mononuclear cells were surface-stained with ABflo® 488 Rabbit anti-Human/Monkey CD3 mAb (A26283,5  $\mu\text{l}/\text{Test}$ ) and ABflo® 647 Rabbit IgG isotype control (A22070,5  $\mu\text{l}/\text{Test}$ ,left) or ABflo® 647 Rabbit anti-Human/Monkey HLA-DR mAb (A25080,5  $\mu\text{l}/\text{Test}$ ,right). Cells in the lymphocyte gate were used for analysis.