

ABflo® 647 Rabbit anti-Human LIFR/CD118 mAb

Catalog No.: A25077

Basic Information

Observed MW

Calculated MW

124kDa

Category

Primary antibody

Applications

FC

Cross-Reactivity

Human

CloneNo number

ARC65282

Conjugate

ABflo® 647. Ex:648nm. Em:664nm.

Background

This gene encodes a protein that belongs to the type I cytokine receptor family. This protein combines with a high-affinity converter subunit, gp130, to form a receptor complex that mediates the action of the leukemia inhibitory factor, a polyfunctional cytokine that is involved in cellular differentiation, proliferation and survival in the adult and the embryo. Mutations in this gene cause Schwartz-Jampel syndrome type 2, a disease belonging to the group of the bent-bone dysplasias. A translocation that involves the promoter of this gene, t(5;8)(p13;q12) with the pleiomorphic adenoma gene 1, is associated with salivary gland pleiomorphic adenoma, a common type of benign epithelial tumor of the salivary gland. Multiple splice variants encoding two different isoforms have been found for this gene.

Recommended Dilutions

FC 5 µl per 10⁶ cells in
100 µl volume

Immunogen Information

Gene ID

3977

Swiss Prot

P42702

Immunogen

Recombinant protein (or fragment). This information is considered to be commercially sensitive.

Synonyms

SWS; SJS2; STWS; CD118; LIF-R

Contact

☎ | 400-999-6126

✉ | cn.market@abclonal.com.cn

🌐 | www.abclonal.com.cn

Product Information

Source

Rabbit

Isotype

IgG

Purification

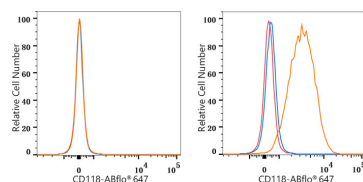
Affinity purification

Storage

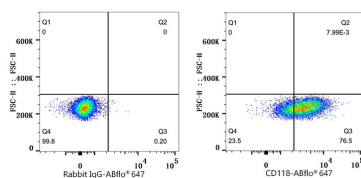
Store at 2-8°C. Avoid freeze.

Buffer: PBS containing 0.2% BSA, preserved with proclin300 or sodium azide (as specified on the Certificate of Analysis), pH 7.3.

Validation Data



Flow cytometry: 1X10⁶ REH cells (negative control, left) and HeLa cells (right) were surface-stained with ABflo® 647 Rabbit anti-Human LIFR/CD118 mAb (A25077, 5 µl/test, orange line) or ABflo® 647 Rabbit IgG isotype control (A22070, 5 µl/test, blue line). Non-fluorescently stained cells were used as blank control (red line).



Flow cytometry: 1X10⁶ HeLa cells were surface-stained with ABflo® 647 Rabbit IgG isotype control (A22070, 5 µl/test, left) or ABflo® 647 Rabbit anti-Human LIFR/CD118 mAb (A25077, 5 µl/test, right).