

ABflo® 647 Rabbit anti-Human CD104/Integrin β4 mAb

Catalog No.: A25063

Basic Information

Observed MW

Calculated MW

202kDa

Category

Primary antibody

Applications

IF/ICC,FC

Cross-Reactivity

Human

CloneNo number

ARC64818

Conjugate

ABflo® 647. Ex:648nm. Em:664nm.

Background

Integrins are heterodimers comprised of alpha and beta subunits, that are noncovalently associated transmembrane glycoprotein receptors. Different combinations of alpha and beta polypeptides form complexes that vary in their ligand-binding specificities. Integrins mediate cell-matrix or cell-cell adhesion, and transduced signals that regulate gene expression and cell growth. This gene encodes the integrin beta 4 subunit, a receptor for the laminins. This subunit tends to associate with alpha 6 subunit and is likely to play a pivotal role in the biology of invasive carcinoma. Mutations in this gene are associated with epidermolysis bullosa with pyloric atresia. Multiple alternatively spliced transcript variants encoding distinct isoforms have been found for this gene.

Recommended Dilutions

IF/ICC 1:50 - 1:200

FC 5 µl per 10⁶ cells in
100 µl volume

Immunogen Information

Gene ID

3691

Swiss Prot

P16144

Immunogen

Recombinant protein (or fragment). This information is considered to be commercially sensitive.

Synonyms

CD104; GP150; JEB5A; JEB5B

Contact

☎ | 400-999-6126

✉ | cn.market@abclonal.com.cn🌐 | www.abclonal.com.cn

Product Information

Source

Rabbit

Isotype

IgG

Purification

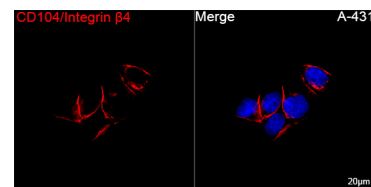
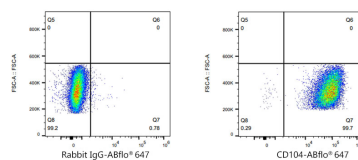
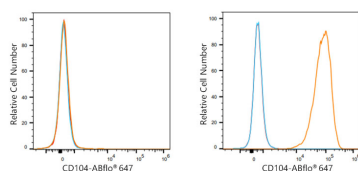
Affinity purification

Storage

Store at 2-8°C. Avoid freeze.

Buffer: PBS containing 0.2% BSA, preserved with proclin300 or sodium azide (as specified on the Certificate of Analysis), pH 7.3.

Validation Data



Flow cytometry: 1×10^6 K-562 cells (negative control, left) and A431 cells (right) were surface-stained with ABflo® 647 Rabbit anti-Human CD104/Integrin $\beta 4$ mAb (A25063, 5 μ l/Test, orange line) or ABflo® 647 Rabbit IgG isotype control (A22070, 5 μ l/Test, blue line). Non-fluorescently stained cells were used as blank control (red line).

Flow cytometry: 1×10^6 A431 cells were surface-stained with ABflo® 647 Rabbit IgG isotype control (A22070, 5 μ l/Test, left) or ABflo® 647 Rabbit anti-Human CD104/Integrin $\beta 4$ mAb (A25063, 5 μ l/Test, right).

Confocal imaging of A-431 cells using ABflo® 647 Rabbit anti-Human CD104/Integrin $\beta 4$ mAb (A25063, dilution 1:100). DAPI was used for nuclear staining (Blue). Objective: 100x.