

# KDM7A Rabbit pAb

Catalog No.: A25048

## Basic Information

### Observed MW

Refer to figures

### Calculated MW

106kDa

### Category

Primary antibody

### Applications

IHC-P, ELISA

### Cross-Reactivity

Human, Mouse, Rat

## Background

Enables histone demethylase activity; methylated histone binding activity; and transition metal ion binding activity. Involved in histone lysine demethylation. Located in nucleolus and nucleoplasm. Implicated in melanoma.

## Recommended Dilutions

**IHC-P** 1:50 - 1:200

**ELISA** Recommended starting concentration is 1 µg/mL. Please optimize the concentration based on your specific assay requirements.

## Immunogen Information

### Gene ID

80853

### Swiss Prot

Q6ZMT4

### Immunogen

Synthetic peptide. This information is considered to be commercially sensitive.

### Synonyms

JHDM1D; KDM7A

## Contact

 | 400-999-6126

 | [cn.market@abclonal.com.cn](mailto:cn.market@abclonal.com.cn)

 | [www.abclonal.com.cn](http://www.abclonal.com.cn)

## Product Information

### Source

Rabbit

### Isotype

IgG

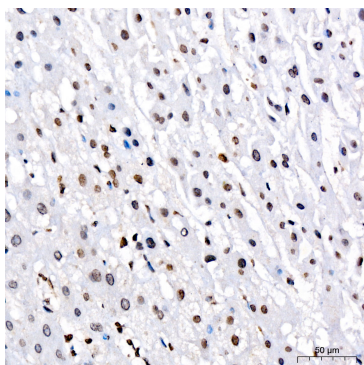
### Purification

Affinity purification

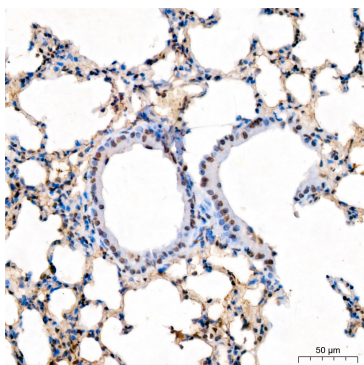
### Storage

Store at -20°C. Avoid freeze / thaw cycles.

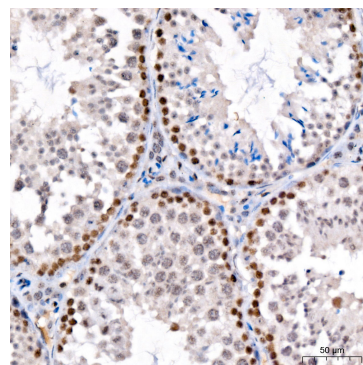
Buffer: PBS containing 50% glycerol, preserved with proclin300 or sodium azide (as specified on the Certificate of Analysis), pH 7.3.



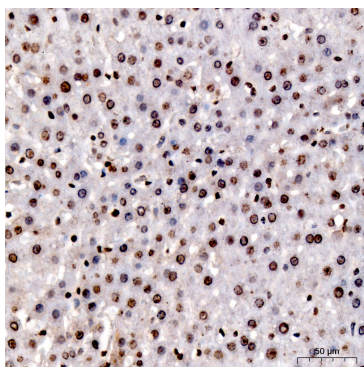
Immunohistochemistry analysis of paraffin-embedded Human liver cancer tissue using KDM7A Rabbit pAb (A25048) at a dilution of 1:100 (40x lens). High pressure antigen retrieval was performed with 0.01 M citrate buffer (pH 6.0) prior to IHC staining.



Immunohistochemistry analysis of paraffin-embedded Mouse lung tissue using KDM7A Rabbit pAb (A25048) at a dilution of 1:100 (40x lens). High pressure antigen retrieval was performed with 0.01 M citrate buffer (pH 6.0) prior to IHC staining.



Immunohistochemistry analysis of paraffin-embedded Mouse testis tissue using KDM7A Rabbit pAb (A25048) at a dilution of 1:100 (40x lens). High pressure antigen retrieval was performed with 0.01 M citrate buffer (pH 6.0) prior to IHC staining.



Immunohistochemistry analysis of paraffin-embedded Rat liver tissue using KDM7A Rabbit pAb (A25048) at a dilution of 1:100 (40x lens). High pressure antigen retrieval was performed with 0.01 M citrate buffer (pH 6.0) prior to IHC staining.