

ABflo® 488 Rabbit anti-Human CD153 mAb

Catalog No.: A24981

Basic Information

Observed MW

Calculated MW

26kDa

Category

Primary antibody

Applications

FC

Cross-Reactivity

Human

CloneNo number

ARC64953

Conjugate

ABflo® 488. Ex:491nm. Em:516nm.

Recommended Dilutions

FC 5 µl per 10⁶ cells in
100 µl volume

Background

The protein encoded by this gene is a cytokine that belongs to the tumor necrosis factor (TNF) ligand family. This cytokine is a ligand for TNFRSF8/CD30, which is a cell surface antigen and a marker for Hodgkin lymphoma and related hematologic malignancies. The engagement of this cytokine expressed on B cell surface plays an inhibitory role in modulating Ig class switch. This cytokine was shown to enhance cell proliferation of some lymphoma cell lines, while to induce cell death and reduce cell proliferation of other lymphoma cell lines. The pleiotropic biologic activities of this cytokine on different CD30+ lymphoma cell lines may play a pathophysiologic role in Hodgkin's and some non-Hodgkin's lymphomas. Two transcript variants encoding different isoforms have been found for this gene.

Immunogen Information

Gene ID

944

Swiss Prot

P32971

Immunogen

Recombinant protein (or fragment). This information is considered to be commercially sensitive.

Synonyms

CD153; CD30L; CD30LG; TNLG3A

Contact

☎ | 400-999-6126

✉ | cn.market@abclonal.com.cn

🌐 | www.abclonal.com.cn

Product Information

Source

Rabbit

Isotype

IgG

Purification

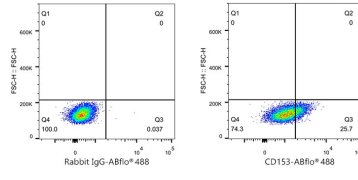
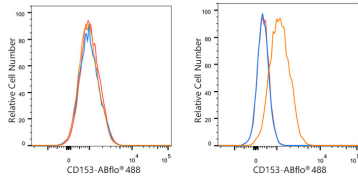
Affinity purification

Storage

Store at 2-8°C. Avoid freeze.

Buffer: PBS containing 0.2% BSA, preserved with proclin300 or sodium azide (as specified on the Certificate of Analysis), pH 7.3.

Validation Data



Flow cytometry: 1×10^6 K-562 cells (negative control, left) and Daudi cells (right) were surface-stained with ABflo® 488 Rabbit anti-Human CD153 mAb (A24981,5 $\mu\text{l}/\text{Test}$, orange line) or ABflo® 488 Rabbit IgG isotype control (A22069,5 $\mu\text{l}/\text{Test}$, blue line). Non-fluorescently stained cells were used as blank control (red line).

Flow cytometry: 1×10^6 Daudi cells were surface-stained with ABflo® 488 Rabbit IgG isotype control (A22069,5 $\mu\text{l}/\text{Test}$, left) or ABflo® 488 Rabbit anti-Human CD153 mAb (A24981,5 $\mu\text{l}/\text{Test}$, right).