

# CD150/SLAM Rabbit mAb

Catalog No.: A24977 **Recombinant**

## Basic Information

### Observed MW

### Calculated MW

38kDa

### Category

Primary antibody

### Applications

FC

### Cross-Reactivity

Mouse

### CloneNo number

ARC64802

## Background

Enables identical protein binding activity and signaling receptor activity. Involved in natural killer cell activation; positive regulation of activated T cell proliferation; and regulation of cytokine production. Acts upstream of or within several processes, including leukocyte chemotaxis involved in inflammatory response; positive regulation of leukocyte chemotaxis; and regulation of vesicle fusion. Located in external side of plasma membrane and phagocytic vesicle. Is expressed in liver lobe. Orthologous to human SLAMF1 (signaling lymphocytic activation molecule family member 1).

## Recommended Dilutions

FC 1:100 - 1:500

## Immunogen Information

### Gene ID

27218

### Swiss Prot

Q9QUM4

### Immunogen

Recombinant protein (or fragment). This information is considered to be commercially sensitive.

### Synonyms

Slam; CD150; IPO-3; CDw150; ESTM51; 4933415F16; CD150/SLAM

## Contact

☎ | 400-999-6126

✉ | [cn.market@abclonal.com.cn](mailto:cn.market@abclonal.com.cn)

🌐 | [www.abclonal.com.cn](http://www.abclonal.com.cn)

## Product Information

### Source

Rabbit

### Isotype

IgG

### Purification

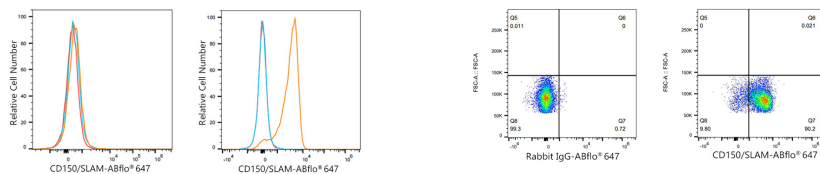
Affinity purification

### Storage

Store at -20°C. Avoid freeze / thaw cycles.

Buffer: PBS containing 50% glycerol and 0.05% BSA, preserved with proclin300 or sodium azide (as specified on the Certificate of Analysis), pH 7.3.

## Validation Data



Flow cytometry:  $1 \times 10^6$  C2C12 cells (negative control, left) and mouse thymocytes (right) were surface-stained with CD150/SLAM Rabbit mAb (A24977, 2 µg/mL, orange line) or ABflo® 647 Rabbit IgG isotype control (A22070, 5 µl/Test, blue line), followed by Alexa Fluor® 647 conjugated goat anti-rabbit pAb staining. Non-fluorescently stained cells were used as blank control (red line).

Flow cytometry:  $1 \times 10^6$  mouse thymocytes were surface-stained with ABflo® 647 Rabbit IgG isotype control (A22070, 5 µl/Test, left) or CD150/SLAM Rabbit mAb (A24977, 2 µg/mL, right).