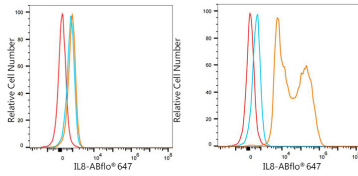
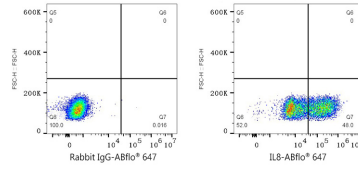


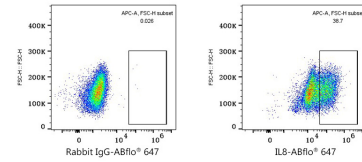
Validation Data



Flow cytometry: 1×10^6 293T cells (negative control, left) and 293T (Transfection, right) cells were intracellularly-stained with ABflo® 647 Rabbit anti-Human IL8 mAb (A24960, 5 μ l/Test, orange line) or ABflo® 647 Rabbit IgG isotype control (A22070, 5 μ l/Test, blue line). Non-fluorescently stained cells were used as blank control (red line).



Flow cytometry: 1×10^6 293T (Transfection) cells were intracellularly-stained with ABflo® 647 Rabbit IgG isotype control (A22070, 5 μ l/Test, left) or ABflo® 647 Rabbit anti-Human IL8 mAb (A24960, 5 μ l/Test, right).



Flow cytometry: 1×10^6 THP-1 cells (untreated, left) and THP-1 cells (treated with 100ng/ml TPA for 24 hours and 5 μ g/mL LPS for 7 hours, right) were intracellularly-stained with ABflo® 647 Rabbit anti-Human IL8 mAb (A24960, 5 μ l/Test).