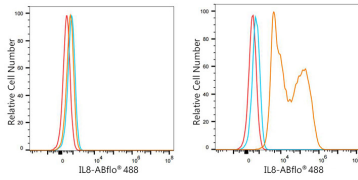
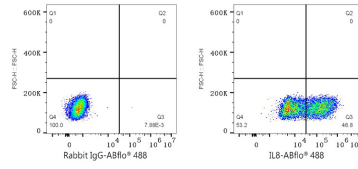




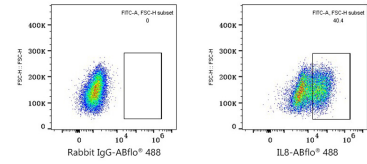
## Validation Data



Flow cytometry:  $1 \times 10^6$  293T cells (negative control, left) and 293T (Transfection, right) cells were intracellularly-stained with ABflo® 488 Rabbit anti-Human IL8 mAb (A24959, 5  $\mu$ l/Test, orange line) or ABflo® 488 Rabbit IgG isotype control (A22069, 5  $\mu$ l/Test, blue line). Non-fluorescently stained cells were used as blank control (red line).



Flow cytometry:  $1 \times 10^6$  293T (Transfection) cells were intracellularly-stained with ABflo® 488 Rabbit IgG isotype control (A22069, 5  $\mu$ l/Test, left) or ABflo® 488 Rabbit anti-Human IL8 mAb (A24959, 5  $\mu$ l/Test, right).



Flow cytometry:  $1 \times 10^6$  THP-1 cells (untreated, left) and THP-1 cells (treated with 100ng/ml TPA for 24 hours and 5  $\mu$ g/mL LPS for 7 hours, right) were intracellularly-stained with ABflo® 488 Rabbit anti-Human IL8 mAb (A24959, 5  $\mu$ l/Test).