

# $\alpha$ -Synuclein Rabbit mAb

Catalog No.: A24951 **Recombinant**

## Basic Information

**Observed MW**

18kDa

**Calculated MW**

14kDa

**Category**

Primary antibody

**Applications**

WB, IP, IF/ICC, IF-P, ELISA

**Cross-Reactivity**

Human, Mouse, Rat

**CloneNo number**

ARC64510

## Background

Alpha-synuclein is a member of the synuclein family, which also includes beta- and gamma-synuclein. Synucleins are abundantly expressed in the brain and alpha- and beta-synuclein inhibit phospholipase D2 selectively. SNCA may serve to integrate presynaptic signaling and membrane trafficking. Defects in SNCA have been implicated in the pathogenesis of Parkinson disease. SNCA peptides are a major component of amyloid plaques in the brains of patients with Alzheimer's disease. Alternatively spliced transcripts encoding different isoforms have been identified for this gene.

## Recommended Dilutions

**WB** 1:3500 - 1:7000**IP** 0.5 $\mu$ g-4 $\mu$ g antibody for  
400 $\mu$ g-800 $\mu$ g extracts of  
whole cells**IF/ICC** 1:200 - 1:800**IF-P** 1:200 - 1:800**ELISA** Recommended starting  
concentration is 1  $\mu$ g/mL.  
Please optimize the  
concentration based on  
your specific assay  
requirements.

## Immunogen Information

**Gene ID**

6622

**Swiss Prot**

P37840

**Immunogen**

Recombinant protein (or fragment). This information is considered to be commercially sensitive.

**Synonyms**PD1; NACP; PARK1; PARK4;  $\alpha$ -Synuclein

## Product Information

**Source**

Rabbit

**Isotype**

IgG

**Purification**

Affinity purification

**Storage**

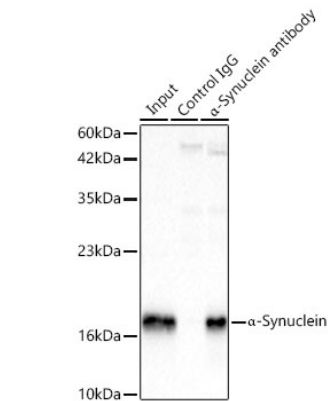
Store at -20°C. Avoid freeze / thaw cycles.

Buffer: PBS containing 50% glycerol and 0.05% BSA, preserved with proclin300 or sodium azide (as specified on the Certificate of Analysis), pH 7.3.

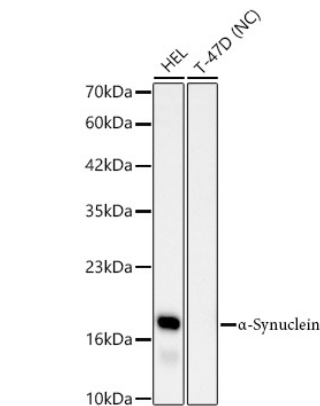
## Contact

 | 400-999-6126 | [cn.market@abclonal.com.cn](mailto:cn.market@abclonal.com.cn) | [www.abclonal.com.cn](http://www.abclonal.com.cn)

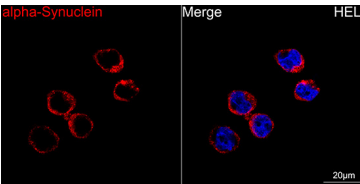
Validation Data



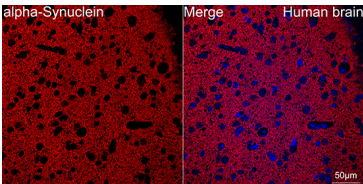
Immunoprecipitation of α-Synuclein in 600 μg extracts from Mouse brain using 3 μg α-Synuclein Rabbit mAb (A24951). Western blot analysis was performed using α-Synuclein Rabbit mAb (A24951) at 1:1000 dilution.



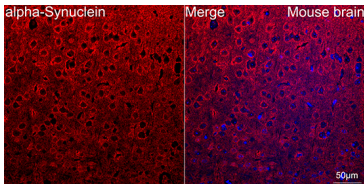
Western blot analysis of various lysates using α-Synuclein Rabbit mAb (A24951) at 1:7000 dilution. Secondary antibody: HRP-conjugated Goat anti-Rabbit IgG (H+L) (AS014) at 1:10000 dilution. Lysates/proteins: 25μg per lane. Blocking buffer: 3% nonfat dry milk in TBST. Detection: ECL Basic Kit (RM00020). Negative control (NC): T-47D. Exposure time: 90s.



Confocal imaging of HEL cells using α-Synuclein Rabbit mAb (A24951, dilution 1:200) followed by a further incubation with Cy3 Goat Anti-Rabbit IgG (H+L) (AS007, dilution 1:500) (Red). DAPI was used for nuclear staining (Blue). Objective: 100x.



Confocal imaging of paraffin-embedded human brain using α-Synuclein Rabbit mAb (A24951, dilution 1:200) followed by a further incubation with Cy3 Goat Anti-Rabbit IgG (H+L) (AS007, dilution 1:500) (Red). DAPI was used for nuclear staining (Blue). Objective: 40x. Perform high pressure antigen retrieval with 0.01M citrate buffer (pH 6.0) prior to IF staining.



Confocal imaging of paraffin-embedded mouse brain using α-Synuclein Rabbit mAb (A24951, dilution 1:200) followed by a further incubation with Cy3 Goat Anti-Rabbit IgG (H+L) (AS007, dilution 1:500) (Red). DAPI was used for nuclear staining (Blue). Objective: 40x. Perform high pressure antigen retrieval with 0.01M citrate buffer (pH 6.0) prior to IF staining.