

ABflo® 647 Rabbit anti-Human CD98 mAb

Catalog No.: A24933

Basic Information

Observed MW

Calculated MW

57kDa/61kDa/67kDa/68kDa/71kDa

Category

Primary antibody

Applications

FC

Cross-Reactivity

Human

CloneNo number

ARC64398

Conjugate

ABflo® 647. Ex:648nm. Em:664nm.

Background

This gene is a member of the solute carrier family and encodes a cell surface, transmembrane protein. The protein exists as the heavy chain of a heterodimer, covalently bound through di-sulfide bonds to one of several possible light chains. The encoded transporter plays a role in regulation of intracellular calcium levels and transports L-type amino acids. Alternatively spliced transcript variants, encoding different isoforms, have been characterized.

Recommended Dilutions

FC 5 µl per 10⁶ cells in
100 µl volume

Immunogen Information

Gene ID

6520

Swiss Prot

P08195

Immunogen

Recombinant protein (or fragment). This information is considered to be commercially sensitive.

Synonyms

4F2; CD98; MDU1; 4F2HC; 4T2HC; NACAE; CD98HC

Contact

 | 400-999-6126

 | cn.market@abclonal.com.cn

 | www.abclonal.com.cn

Product Information

Source

Rabbit

Isotype

IgG

Purification

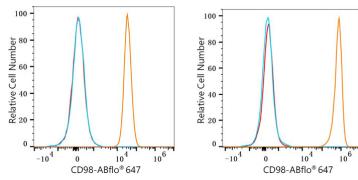
Affinity purification

Storage

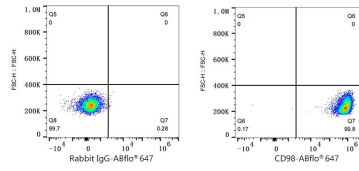
Store at 2-8°C. Avoid freeze.

Buffer: PBS containing 0.2% BSA, preserved with proclin300 or sodium azide (as specified on the Certificate of Analysis), pH 7.3.

Validation Data



Flow cytometry: 1×10^6 SH-SY5Y cells (Low Expression, left) and HeLa cells (right) were surface-stained with ABflo® 647 Rabbit anti-Human CD98 mAb (A24933, 5 μ l/Test, orange line) or ABflo® 647 Rabbit IgG isotype control (A22070, 5 μ l/Test, blue line). Non-fluorescently stained cells were used as blank control (red line).



Flow cytometry: 1×10^6 HeLa cells were surface-stained with ABflo® 647 Rabbit IgG isotype control (A22070, 5 μ l/Test, left) or ABflo® 647 Rabbit anti-Human CD98 mAb (A24933, 5 μ l/Test, right).