

ABflo® 555 Mouse anti-Rabbit IgG (Fc) mAb

Catalog No.: A24930 **1 Publications**

Basic Information

Observed MW

Calculated MW
35kDa

Category
Primary antibody

Applications
FC

Cross-Reactivity
Rabbit

CloneNo number
AMC50001-ABf555

Conjugate
ABflo® 555. Ex:555nm. Em:565nm.

Background

Secondary antibodies are affinity-purified antibodies which will work with target-specific primary antibody in the detection, sorting or purification of its specified target. Secondary antibodies offer increased versatility enabling users to use many detection systems (e.g. HRP, AP, fluorescence). They can also provide greater sensitivity through signal amplification as multiple secondary antibodies. Most commonly, secondary antibodies are generated by immunizing the host animal (different from host species of primary antibody) with a pooled population of normal immunoglobulins from the host species of primary antibody and can be further purified and modified (i.e. antibody fragmentation, label conjugation, etc.) to ensure well-characterized specificity to corresponding normal immunoglobulins.

Recommended Dilutions

FC 5 µl per 10⁶ cells in
100 µl volume

Immunogen Information

Gene ID	Swiss Prot
	P01870

Immunogen

Recombinant fusion protein containing a sequence corresponding to amino acids 96-323 of rabbit IgG (Fc) (P01870).

Synonyms

Contact

☎		400-999-6126
✉		cn.market@abclonal.com.cn
🌐		www.abclonal.com.cn

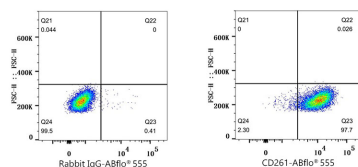
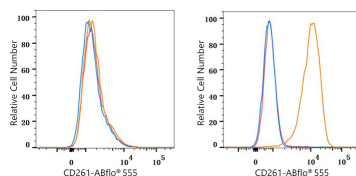
Product Information

Source	Isotype	Purification
Mouse	mouse IgG1	Affinity purification

Storage

Store at 2-8°C. Avoid freeze.
Buffer: PBS with 0.03% proclin300,pH7.3.

Validation Data



Flow cytometry: 1×10^6 BeWo cells (negative control, left) and HeLa cells (right) were surface-stained with Rabbit anti-Human CD261/TRAIL-R1 mAb (2 $\mu\text{g}/\text{mL}$, orange line) or ABflo® 555 Rabbit IgG isotype control (5 $\mu\text{l}/\text{Test}$, blue line), then stained with ABflo® 555 Mouse anti-Rabbit IgG (Fc) mAb (A24930, 5 $\mu\text{l}/\text{Test}$) was used as a secondary antibody. Non-fluorescently stained cells were used as blank control (red line).

Flow cytometry: 1×10^6 HeLa cells were surface-stained with ABflo® 555 Rabbit IgG isotype control (2 $\mu\text{g}/\text{mL}$, left) or Rabbit anti-Human CD261/TRAIL-R1 mAb (5 $\mu\text{g}/\text{mL}$, right). ABflo® 555 Mouse anti-Rabbit IgG (Fc) mAb (A24930, 5 $\mu\text{l}/\text{Test}$) was used as a secondary antibody.