

ABflo® 594 Rabbit anti-Mouse NK1.1/CD161c mAb

Catalog No.: A24923

Basic Information

Observed MW

Refer to figures

Calculated MW

25kDa

Category

Primary antibody

Applications

FC

Cross-Reactivity

Mouse

CloneNo number

ARC57666

Conjugate

ABflo® 594. Ex:588nm. Em:604nm.

Recommended Dilutions

FC 5 µl per 10⁶ cells in
100 µl volume

Background

Enables identical protein binding activity and signaling receptor activity. Acts upstream of or within natural killer cell activation and positive regulation of natural killer cell mediated cytotoxicity. Located in external side of plasma membrane. Is integral component of plasma membrane. Is expressed in thymus primordium. Orthologous to human KLRB1 (killer cell lectin like receptor B1).

Immunogen Information

Gene ID

17059

Swiss Prot

P27814

Immunogen

Recombinant protein (or fragment). This information is considered to be commercially sensitive.

Synonyms

Nk1; Ly59; Nk-1; CD161; Ly-59; Ly55c; NK1.1; NKRP1; Nk1.2; Klrb1b; NK-RP1; Nk-1.2; Nkrp1b; Nkrp1c; ly-55c; NKRP140; NKR-P1.9

Contact

 | 400-999-6126

 | cn.market@abclonal.com.cn

 | www.abclonal.com.cn

Product Information

Source

Rabbit

Isotype

IgG

Purification

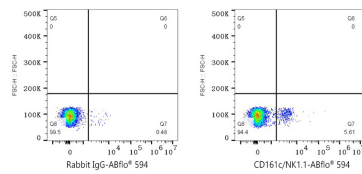
Affinity purification

Storage

Store at 2-8°C. Avoid freeze.

Buffer: PBS containing 0.2% BSA, preserved with proclin300 or sodium azide (as specified on the Certificate of Analysis), pH 7.3.

Validation Data



Flow cytometry: 1×10^6 C57BL/6 mouse splenocytes were surface-stained with ABflo® 594 Rabbit IgG isotype control (A23821,5 μ l/Test,left) or ABflo® 594 Rabbit anti-Mouse CD161/NK1.1 mAb (A24923,5 μ l/Test,right).