

# ABflo® 488 Rabbit anti-Mouse NK1.1/CD161c mAb

Catalog No.: A24922

## Basic Information

### Observed MW

Refer to figures

### Calculated MW

25kDa

### Category

Primary antibody

### Applications

FC

### Cross-Reactivity

Mouse

### CloneNo number

ARC57666

### Conjugate

ABflo® 488. Ex:491nm. Em:516nm.

## Recommended Dilutions

**FC** 5 µl per 10<sup>6</sup> cells in  
100 µl volume

## Background

Enables identical protein binding activity and signaling receptor activity. Acts upstream of or within natural killer cell activation and positive regulation of natural killer cell mediated cytotoxicity. Located in external side of plasma membrane. Is integral component of plasma membrane. Is expressed in thymus primordium. Orthologous to human KLRB1 (killer cell lectin like receptor B1).

## Immunogen Information

### Gene ID

17059

### Swiss Prot

P27814

### Immunogen

Recombinant protein (or fragment). This information is considered to be commercially sensitive.

### Synonyms

Nk1; Ly59; Nk-1; CD161; Ly-59; Ly55c; NK1.1; NKRP1; Nk1.2; Klrb1b; NK-RP1; Nk-1.2; Nkrp1b; Nkrp1c; ly-55c; NKRP140; NKR-P1.9

## Contact

 | 400-999-6126

 | [cn.market@abclonal.com.cn](mailto:cn.market@abclonal.com.cn)

 | [www.abclonal.com.cn](http://www.abclonal.com.cn)

## Product Information

### Source

Rabbit

### Isotype

IgG

### Purification

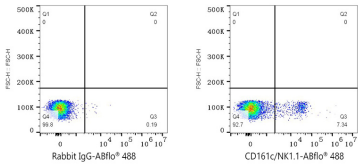
Affinity purification

### Storage

Store at 2-8°C. Avoid freeze.

Buffer: PBS containing 0.2% BSA, preserved with proclin300 or sodium azide (as specified on the Certificate of Analysis), pH 7.3.

# Validation Data



Flow cytometry: 1X10<sup>6</sup> C57BL/6 mouse splenocytes were surface-stained with ABflo® 488 Rabbit IgG isotype control (A22069,5 µl/Test,left) or ABflo® 488 Rabbit anti-Mouse CD161c/NK1.1 mAb (A24922,5 µl/Test,right).