

# CD267/TACI Rabbit mAb

Catalog No.: A24921 **Recombinant**

## Basic Information

### Observed MW

Refer to figures

### Calculated MW

27kDa

### Category

Primary antibody

### Applications

FC

### Cross-Reactivity

Mouse

### CloneNo number

ARC62807

## Background

Acts upstream of or within B cell homeostasis; hematopoietic progenitor cell differentiation; and negative regulation of B cell proliferation. Located in external side of plasma membrane. Is integral component of plasma membrane. Is expressed in renal vasculature. Used to study systemic lupus erythematosus. Human ortholog(s) of this gene implicated in common variable immunodeficiency. Orthologous to human TNFRSF13B (TNF receptor superfamily member 13B).

## Recommended Dilutions

FC 1:500 - 1:1000

## Immunogen Information

### Gene ID

57916

### Swiss Prot

Q9ET35

### Immunogen

Recombinant protein (or fragment). This information is considered to be commercially sensitive.

### Synonyms

Taci; 1200009E08Rik; CD267/TACI

## Contact

☎ | 400-999-6126

✉ | [cn.market@abclonal.com.cn](mailto:cn.market@abclonal.com.cn)

🌐 | [www.abclonal.com.cn](http://www.abclonal.com.cn)

## Product Information

### Source

Rabbit

### Isotype

IgG

### Purification

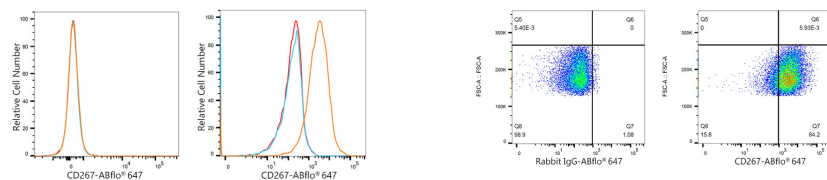
Affinity purification

### Storage

Store at -20°C. Avoid freeze / thaw cycles.

Buffer: PBS containing 50% glycerol and 0.05% BSA, preserved with proclin300 or sodium azide (as specified on the Certificate of Analysis), pH 7.3.

## Validation Data



Flow cytometry:  $1 \times 10^6$  Neuro-2a cells (negative control, left) and A20 cells (right) were surface-stained with CD267/TACI Rabbit mAb (A24921, 2  $\mu\text{g}/\text{mL}$ , orange line) or ABflo® 647 Rabbit IgG isotype control (A22070, 5  $\mu\text{l}/\text{test}$ , blue line), followed by Alexa Fluor® 647 conjugated goat anti-rabbit pAb staining. Non-fluorescently stained cells were used as blank control (red line).

Flow cytometry:  $1 \times 10^6$  A20 cells were surface-stained with ABflo® 647 Rabbit IgG isotype control (A22070, 5  $\mu\text{l}/\text{test}$ , left) or CD267/TACI Rabbit mAb (A24921, 2  $\mu\text{g}/\text{mL}$ , right).