

SSCA1/SerpinB3 Rabbit mAb

Catalog No.: A24911 **Recombinant**

Basic Information

Observed MW

45kDa

Calculated MW

45kDa

Category

Primary antibody

Applications

WB,IF/ICC,ELISA

Cross-Reactivity

Human, Mouse, Rat

CloneNo number

ARC63576

Background

Enables cysteine-type endopeptidase inhibitor activity; protease binding activity; and virus receptor activity. Involved in several processes, including autocrine signaling; paracrine signaling; and regulation of cellular protein metabolic process. Located in cytoplasmic vesicle; extracellular exosome; and nucleus.

Recommended Dilutions

WB 1:2000 - 1:10000

IF/ICC 1:50 - 1:200

ELISA Recommended starting concentration is 1 µg/mL. Please optimize the concentration based on your specific assay requirements.

Immunogen Information

Gene ID

6317

Swiss Prot

P29508

Immunogen

Recombinant protein (or fragment). This information is considered to be commercially sensitive.

Synonyms

SCC; T4-A; SCCA1; SSCA1; SCCA-1; HsT1196; SCCA-PD; SSCA1/SerpinB3

Contact

 | 400-999-6126

 | cn.market@abclonal.com.cn

 | www.abclonal.com.cn

Product Information

Source

Rabbit

Isotype

IgG

Purification

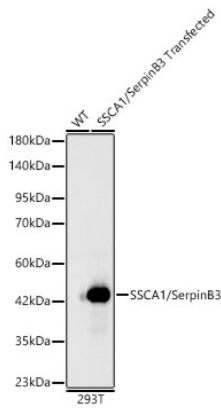
Affinity purification

Storage

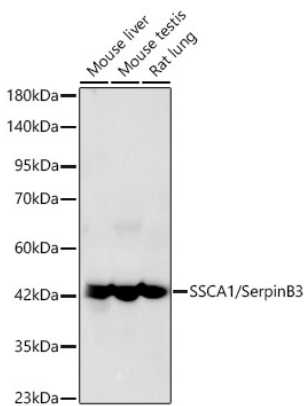
Store at -20°C. Avoid freeze / thaw cycles.

Buffer: PBS containing 50% glycerol and 0.05% BSA, preserved with proclin300 or sodium azide (as specified on the Certificate of Analysis), pH 7.3.

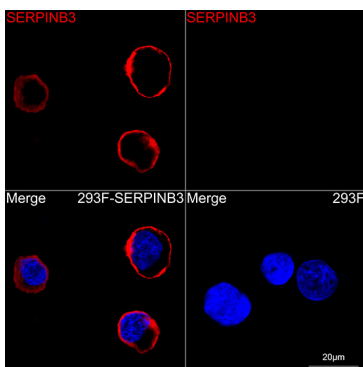
Validation Data



Western blot analysis of lysates from wild type (WT) and 293T cells transfected with SSCA1/SerpinB3, using SSCA1/SerpinB3 Rabbit mAb (A24911) at 1:9000 dilution.
Secondary antibody: HRP-conjugated Goat anti-Rabbit IgG (H+L) (AS014) at 1:10000 dilution.
Lysates/proteins: 25µg per lane.
Blocking buffer: 3% nonfat dry milk in TBST.
Detection: ECL Basic Kit (RM00020).
Exposure time: 10s.



Western blot analysis of various lysates, using SSCA1/SerpinB3 Rabbit mAb (A24911) at 1:9000 dilution.
Secondary antibody: HRP-conjugated Goat anti-Rabbit IgG (H+L) (AS014) at 1:10000 dilution.
Lysates/proteins: 25µg per lane.
Blocking buffer: 3% nonfat dry milk in TBST.
Detection: ECL Basic Kit (RM00020).
Exposure time: 90s.



Confocal imaging of 293F cells transfected with SERPINB3 using SSCA1/SerpinB3 Rabbit mAb (A24911, dilution 1:200) followed by a further incubation with Cy3 Goat Anti-Rabbit IgG (H+L) (AS007, dilution 1:500) (Red). DAPI was used for nuclear staining (blue). Objective: 100x.