

# I $\kappa$ B $\alpha$ Rabbit mAb

Catalog No.: A24909

Recombinant

2 Publications

## Basic Information

**Observed MW**

35kDa

**Calculated MW**

35kDa

**Category**

Primary antibody

**Applications**

WB, ELISA

**Cross-Reactivity**

Human, Mouse, Rat

**CloneNo number**

ARC63567

## Background

Enables NF-kappaB binding activity and heat shock protein binding activity. Involved in several processes, including cytoplasmic sequestering of NF-kappaB; leukocyte migration involved in inflammatory response; and liver regeneration. Acts upstream of or within cellular response to cytokine stimulus and cellular response to organic cyclic compound. Located in cytosol and nucleus. Part of protein-containing complex. Used to study gastritis; pulmonary emphysema; and sciatic neuropathy. Biomarker of several diseases, including acute necrotizing pancreatitis; alcoholic hepatitis; artery disease (multiple); middle cerebral artery infarction; and toxic shock syndrome. Human ortholog(s) of this gene implicated in several diseases, including childhood-onset asthma; hematologic cancer (multiple); hepatitis B; hepatitis C; and lung disease (multiple). Orthologous to human NFKBIA (NFKB inhibitor alpha).

## Recommended Dilutions

**WB** 1:2000 - 1:7000**ELISA** Recommended starting concentration is 1  $\mu$ g/mL. Please optimize the concentration based on your specific assay requirements.

## Immunogen Information

**Gene ID**

25493

**Swiss Prot**

Q63746

**Immunogen**

Recombinant protein (or fragment). This information is considered to be commercially sensitive.

**Synonyms**RL/IF-1; I $\kappa$ B $\alpha$ 

## Contact

 | 400-999-6126 | [cn.market@abclonal.com.cn](mailto:cn.market@abclonal.com.cn) | [www.abclonal.com.cn](http://www.abclonal.com.cn)

## Product Information

**Source**

Rabbit

**Isotype**

IgG

**Purification**

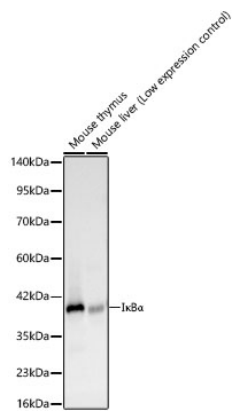
Affinity purification

**Storage**

Store at -20°C. Avoid freeze / thaw cycles.

Buffer: PBS containing 50% glycerol and 0.05% BSA, preserved with proclin300 or sodium azide (as specified on the Certificate of Analysis), pH 7.3.

# Validation Data



Western blot analysis of various lysates, using IκBα Rabbit mAb (A24909) at 1:6000 dilution.  
Secondary antibody: HRP-conjugated Goat anti-Rabbit IgG (H+L) (AS014) at 1:10000 dilution.  
Lysates/proteins: 25μg per lane.  
Blocking buffer: 3% nonfat dry milk in TBST.  
Detection: ECL Basic Kit (RM00020).  
Exposure time: 30s.