

# ABflo® 594 Rabbit anti-Human CD11a mAb

Catalog No.: A24899

## Basic Information

### Observed MW

### Calculated MW

118kDa/129kDa/134kDa

### Category

Primary antibody

### Applications

FC

### Cross-Reactivity

Human

### CloneNo number

ARC62732

### Conjugate

ABflo® 594. Ex:588nm. Em:604nm.

## Background

ITGAL encodes the integrin alpha L chain. Integrins are heterodimeric integral membrane proteins composed of an alpha chain and a beta chain. This I-domain containing alpha integrin combines with the beta 2 chain (ITGB2) to form the integrin lymphocyte function-associated antigen-1 (LFA-1), which is expressed on all leukocytes. LFA-1 plays a central role in leukocyte intercellular adhesion through interactions with its ligands, ICAMs 1-3 (intercellular adhesion molecules 1 through 3), and also functions in lymphocyte costimulatory signaling. Two transcript variants encoding different isoforms have been found for this gene.

## Recommended Dilutions

FC 5 µl per 10<sup>6</sup> cells in  
100 µl volume

## Immunogen Information

### Gene ID

3683

### Swiss Prot

P20701

### Immunogen

Recombinant protein (or fragment). This information is considered to be commercially sensitive.

### Synonyms

CD11A; LFA-1; LFA1A

## Contact

☎ | 400-999-6126

✉ | [cn.market@abclonal.com.cn](mailto:cn.market@abclonal.com.cn)

🌐 | [www.abclonal.com.cn](http://www.abclonal.com.cn)

## Product Information

### Source

Rabbit

### Isotype

IgG

### Purification

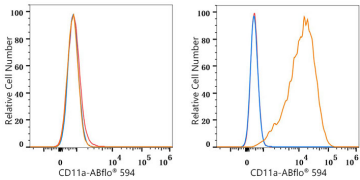
Affinity purification

### Storage

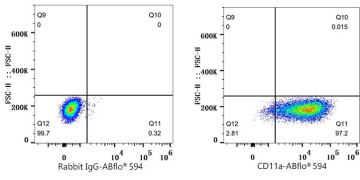
Store at 2-8°C. Avoid freeze.

Buffer: PBS containing 0.2% BSA, preserved with proclin300 or sodium azide (as specified on the Certificate of Analysis), pH 7.3.

# Validation Data



Flow cytometry: 1X10<sup>6</sup> K-562 cells (negative control, left) and THP-1 cells (right) were surface-stained with ABflo® 594 Rabbit anti-Human CD11a mAb (A24899, 5 µl/Test, orange line) or ABflo® 594 Rabbit IgG isotype control (A23821, 5 µl/Test, blue line). Non-fluorescently stained cells were used as blank control (red line).



Flow cytometry: 1X10<sup>6</sup> THP-1 cells were surface-stained with ABflo® 594 Rabbit IgG isotype control (A23821, 5 µl/Test, left) or ABflo® 594 Rabbit anti-Human CD11a mAb (A24899, 5 µl/Test, right).