

CD11a Rabbit mAb

Catalog No.: A24887 **Recombinant**

Basic Information

Observed MW

180kDa

Calculated MW

118kDa/129kDa/134kDa

Category

Primary antibody

Applications

WB,FC

Cross-Reactivity

Human

CloneNo number

ARC62732

Background

ITGAL encodes the integrin alpha L chain. Integrins are heterodimeric integral membrane proteins composed of an alpha chain and a beta chain. This I-domain containing alpha integrin combines with the beta 2 chain (ITGB2) to form the integrin lymphocyte function-associated antigen-1 (LFA-1), which is expressed on all leukocytes. LFA-1 plays a central role in leukocyte intercellular adhesion through interactions with its ligands, ICAMs 1-3 (intercellular adhesion molecules 1 through 3), and also functions in lymphocyte costimulatory signaling. Two transcript variants encoding different isoforms have been found for this gene.

Recommended Dilutions

WB 1:500 - 1:1000

FC 1:100 - 1:500

Immunogen Information

Gene ID

3683

Swiss Prot

P20701

Immunogen

Recombinant protein (or fragment). This information is considered to be commercially sensitive.

Synonyms

CD11A; LFA-1; LFA1A; CD11a

Contact

☎ | 400-999-6126

✉ | cn.market@abclonal.com.cn

🌐 | www.abclonal.com.cn

Product Information

Source

Rabbit

Isotype

IgG

Purification

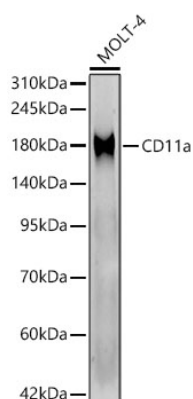
Affinity purification

Storage

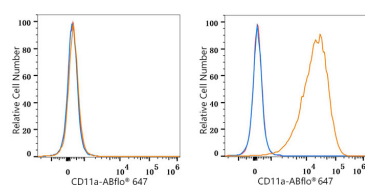
Store at -20°C. Avoid freeze / thaw cycles.

Buffer: PBS containing 50% glycerol and 0.05% BSA, preserved with proclin300 or sodium azide (as specified on the Certificate of Analysis), pH 7.3.

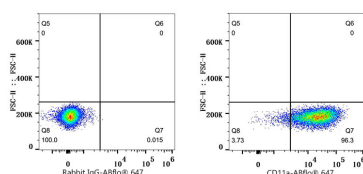
Validation Data



Western blot analysis of lysates from MOLT-4 cells using CD11a Rabbit mAb (A24887) at 1:1000 dilution.
 Secondary antibody: HRP-conjugated Goat anti-Rabbit IgG (H+L) (AS014) at 1:10000 dilution.
 Lysates/proteins: 25µg per lane.
 Blocking buffer: 3% nonfat dry milk in TBST.
 Detection: ECL Enhanced Kit (RM00021).
 Exposure time: 90s.



Flow cytometry: 1×10^6 K-562 cells (negative control, left) and THP-1 cells (right) were surface-stained with CD11a Rabbit mAb (A24887, 2 µg/mL, orange line) or ABflo® 647 Rabbit IgG isotype control (A22070, 5 µL/Test, blue line), followed by Alexa Fluor® 647 conjugated goat anti-rabbit pAb staining. Non-fluorescently stained cells were used as blank control (red line).



Flow cytometry: 1×10^6 THP-1 cells were surface-stained with ABflo® 647 Rabbit IgG isotype control (A22070, 5 µL/Test, left) or CD11a Rabbit mAb (A24887, 2 µg/mL, right).