

# DLL4 Rabbit pAb

**Catalog No.: A24862**

## Basic Information

### Observed MW

90kDa

### Calculated MW

74kDa

### Category

Primary antibody

### Applications

ELISA, WB

### Cross-Reactivity

Human

## Background

This gene is a homolog of the Drosophila delta gene. The delta gene family encodes Notch ligands that are characterized by a DSL domain, EGF repeats, and a transmembrane domain.

## Recommended Dilutions

**WB** 1:500 - 1:1000

## Immunogen Information

### Gene ID

54567

### Swiss Prot

Q9NR61

### Immunogen

Recombinant fusion protein containing a sequence corresponding to amino acids 27-524 of human DLL4 (NP\_061947.1).

### Synonyms

DLL4; AOS6; hdelta2; delta-like protein 4

## Contact

 | 400-999-6126

 | [cn.market@abclonal.com.cn](mailto:cn.market@abclonal.com.cn)

 | [www.abclonal.com.cn](http://www.abclonal.com.cn)

## Product Information

### Source

Rabbit

### Isotype

IgG

### Purification

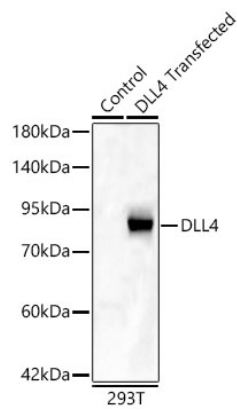
Affinity purification

### Storage

Store at -20°C. Avoid freeze / thaw cycles.

Buffer: PBS with 0.05% proclin300, 50% glycerol, pH7.3.

# Validation Data



Western blot analysis of lysates from wild type (WT) and 293T cells transfected with DLL4 using DLL4 Rabbit pAb(A24862) at 1:1000 dilution.  
Secondary antibody: HRP Goat Anti-Rabbit IgG (H+L) (AS014) at 1:10000 dilution.  
Lysates/proteins: 25 µg per lane.  
Blocking buffer: 3% nonfat dry milk in TBST.  
Detection: ECL Basic Kit (RM00020).  
Exposure time: 20s.