

CCL5 Rabbit pAb

Catalog No.: A24848

Basic Information

Observed MW

13kDa

Calculated MW

10kDa

Category

Primary antibody

Applications

WB, ELISA

Cross-Reactivity

Rat

Background

This gene is one of several chemokine genes clustered on the q arm of chromosome 17. Chemokines are a superfamily of secreted proteins involved in immune regulation and inflammatory processes. According to the arrangement of N-terminal cysteine residues in mature peptides, the superfamily is divided into four subfamilies. This chemotactic factor belongs to the CC subfamily and is a chemotactic agent for blood monocytes, memory T helper cells, and eosinophils. It causes basophils to release histamine and activate eosinophils. This cytokine is one of the main HIV inhibitors produced by CD8+ cells. It is one of the natural ligands of chemokine receptor chemokine receptor 5 (CCR5), which inhibits in vitro replication of HIV-1 R5 strains using CCR5 as a co receptor. Optional splicing leads to multiple transcriptional variants encoding different isomers.

Recommended Dilutions

WB 1:1000 - 1:5000**ELISA** Recommended starting concentration is 1 µg/mL. Please optimize the concentration based on your specific assay requirements.

Immunogen Information

Gene ID

81780

Swiss Prot

P50231

Immunogen

Recombinant protein (or fragment). This information is considered to be commercially sensitive.

Synonyms

C-C motif chemokine 5

Contact

 | 400-999-6126 | cn.market@abclonal.com.cn | www.abclonal.com.cn

Product Information

Source

Rabbit

Isotype

IgG

Purification

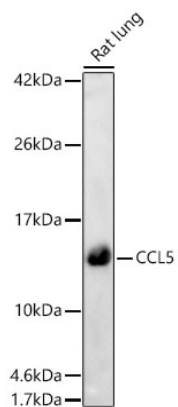
Affinity purification

Storage

Store at -20°C. Avoid freeze / thaw cycles.

Buffer: PBS containing 50% glycerol, preserved with proclin300 or sodium azide (as specified on the Certificate of Analysis), pH 7.3.

Validation Data



Western blot analysis of lysates from Rat lung using CCL5 Rabbit pAb (A24848) at 1:1000 dilution.
Secondary antibody: HRP-conjugated Goat anti-Rabbit IgG (H+L) (AS014) at 1:10000 dilution.
Lysates/proteins: 25 µg per lane.
Blocking buffer: 3% nonfat dry milk in TBST.
Detection: ECL Basic Kit (RM00020).
Exposure time: 180s.