

Aldehyde dehydrogenase 5-A1/SSADH/ALDH5A1 Rabbit mAb

Catalog No.: A24829 **Recombinant**

Basic Information

Observed MW

54kDa

Calculated MW

57kDa

Category

Primary antibody

Applications

WB, IHC-P, IF/ICC, ELISA

Cross-Reactivity

Human, Mouse, Rat

CloneNo number

ARC64127

Background

This protein belongs to the aldehyde dehydrogenase family of proteins. This gene encodes a mitochondrial NAD(+)-dependent succinic semialdehyde dehydrogenase. A deficiency of this enzyme, known as 4-hydroxybutyricaciduria, is a rare inborn error in the metabolism of the neurotransmitter 4-aminobutyric acid (GABA). In response to the defect, physiologic fluids from patients accumulate GHB, a compound with numerous neuromodulatory properties. Two transcript variants encoding distinct isoforms have been identified for this gene.

Recommended Dilutions

WB 1:2000 - 1:8000**IHC-P** 1:200 - 1:2000**IF/ICC** 1:200 - 1:2000

ELISA Recommended starting concentration is 1 µg/mL. Please optimize the concentration based on your specific assay requirements.

Immunogen Information

Gene ID

7915

Swiss Prot

P51649

Immunogen

Recombinant protein (or fragment). This information is considered to be commercially sensitive.

Synonyms

SSDH; SSADH; Aldehyde dehydrogenase 5-A1/SSADH/ALDH5A1?

Contact

 | 400-999-6126 | cn.market@abclonal.com.cn | www.abclonal.com.cn

Product Information

Source

Rabbit

Isotype

IgG

Purification

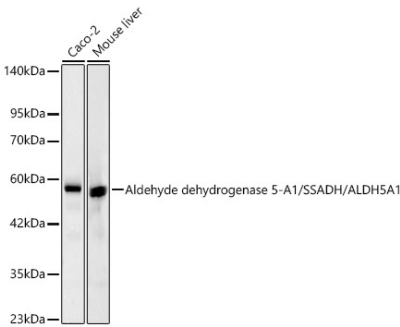
Affinity purification

Storage

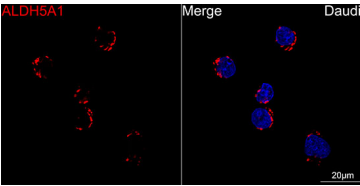
Store at -20°C. Avoid freeze / thaw cycles.

Buffer: PBS containing 50% glycerol and 0.05% BSA, preserved with proclin300 or sodium azide (as specified on the Certificate of Analysis), pH 7.3.

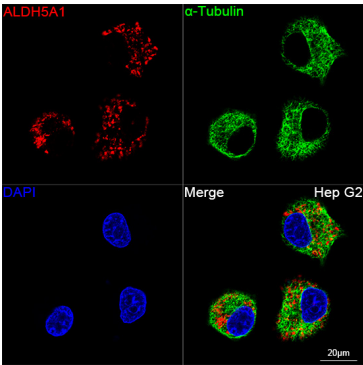
Validation Data



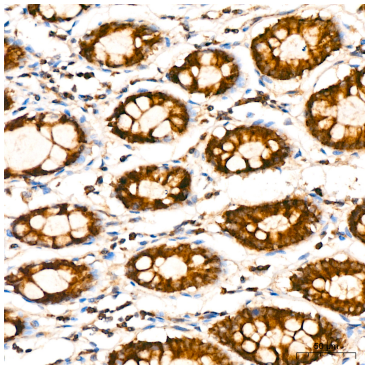
Western blot analysis of various lysates, using Aldehyde dehydrogenase 5-A1/SSADH/ALDH5A1 Rabbit mAb (A24829) at 1:2000 dilution. Secondary antibody: HRP-conjugated Goat anti-Rabbit IgG (H+L) (AS014) at 1:10000 dilution. Lysates/proteins: 25µg per lane. Blocking buffer: 3% nonfat dry milk in TBST. Detection: ECL Basic Kit (RM00020). Exposure time: 20s.



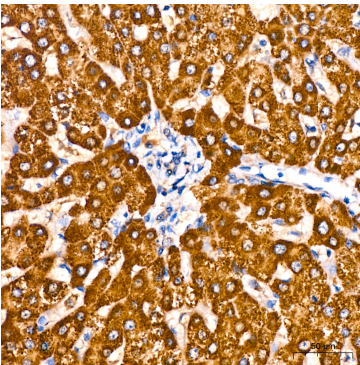
Confocal imaging of Daudi cells using Aldehyde dehydrogenase 5-A1/SSADH/ALDH5A1 Rabbit mAb (A24829, dilution 1:200) followed by a further incubation with Cy3 Goat Anti-Rabbit IgG (H+L) (AS007, dilution 1:500) (Red). DAPI was used for nuclear staining (blue). Objective: 100x.



Confocal imaging of Hep G2 cells using Aldehyde dehydrogenase 5-A1/SSADH/ALDH5A1 Rabbit mAb (A24829, dilution 1:200) followed by a further incubation with Cy3 Goat Anti-Rabbit IgG (H+L) (AS007, dilution 1:500) (Red). The cells were counterstained with α-Tubulin Mouse mAb (AC012, dilution 1:400) followed by incubation with ABflo® 488-conjugated Goat Anti-Mouse IgG (H+L) Ab (AS076, dilution 1:500) (Green). DAPI was used for nuclear staining (blue). Objective: 100x.



Immunohistochemistry analysis of paraffin-embedded Human colon tissue using Aldehyde dehydrogenase 5-A1/SSADH/ALDH5A1 Rabbit mAb (A24829) at a dilution of 1:200 (40x lens). High pressure antigen retrieval performed with 0.01M Citrate buffer (pH 6.0) prior to IHC staining.



Immunohistochemistry analysis of paraffin-embedded Human liver tissue using Aldehyde dehydrogenase 5-A1/SSADH/ALDH5A1 Rabbit mAb (A24829) at a dilution of 1:200 (40x lens). High pressure antigen retrieval performed with 0.01M Citrate buffer (pH 6.0) prior to IHC staining.