

Integrin β 5/ITGB5 Rabbit mAb

Catalog No.: A24824 **Recombinant**

Basic Information

Observed MW

100kDa

Calculated MW

88kDa

Category

Primary antibody

Applications

FC

Cross-Reactivity

Human

CloneNo number

ARC60858

Background

This gene encodes a beta subunit of integrin, which can combine with different alpha chains to form a variety of integrin heterodimers. Integrins are integral cell-surface receptors that participate in cell adhesion as well as cell-surface mediated signaling. The alpha β 5 integrin is involved in adhesion to vitronectin.

Recommended Dilutions

FC 1:100 - 1:500

Immunogen Information

Gene ID

3693

Swiss Prot

P18084

Immunogen

Recombinant protein (or fragment). This information is considered to be commercially sensitive.

Synonyms

ITGB5; integrin beta-5; Integrin β 5/ITGB5

Contact

☎ | 400-999-6126

✉ | cn.market@abclonal.com.cn

🌐 | www.abclonal.com.cn

Product Information

Source

Rabbit

Isotype

IgG

Purification

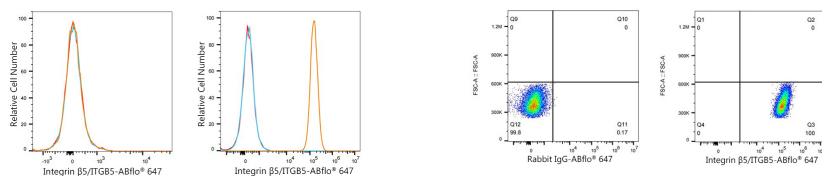
Affinity purification

Storage

Store at -20°C. Avoid freeze / thaw cycles.

Buffer: PBS containing 50% glycerol and 0.05% BSA, preserved with proclin300 or sodium azide (as specified on the Certificate of Analysis), pH 7.3.

Validation Data



Flow cytometry: 1×10^6 Jurkat cells (negative control, left) and A549 cells (right) were surface-stained with Integrin $\beta 5$ /ITGB5 Rabbit mAb (A24824, 5 μ l/Test, orange line) or ABflo® 647 Rabbit IgG isotype control (A22070, 5 μ l/Test, blue line), followed by Alexa Fluor® 647 conjugated goat anti-rabbit pAb staining. Non-fluorescently stained cells were used as blank control (red line).

Flow cytometry: 1×10^6 A549 cells were surface-stained with ABflo® 647 Rabbit IgG isotype control (A22070, 5 μ l/Test, left) or Integrin $\beta 5$ /ITGB5 Rabbit mAb (A24824, 5 μ l/Test, right).