

[KD Validated] Sharpin Rabbit mAb

Catalog No.: A24809 **Recombinant**

Basic Information

Observed MW

40kDa

Calculated MW

40kDa

Category

Primary antibody

Applications

WB,IF/ICC,ELISA

Cross-Reactivity

Human, Rat

CloneNo number

ARC64384

Background

Enables polyubiquitin modification-dependent protein binding activity. Involved in protein linear polyubiquitination and regulation of signal transduction. Located in cytosol. Part of LUBAC complex.

Recommended Dilutions

WB 1:1000 - 1:4000

IF/ICC 1:200 - 1:400

ELISA Recommended starting concentration is 1 µg/mL. Please optimize the concentration based on your specific assay requirements.

Immunogen Information

Gene ID

81858

Swiss Prot

Q9H0F6

Immunogen

Recombinant protein (or fragment). This information is considered to be commercially sensitive.

Synonyms

SIPL1; [KD Validated] Sharpin

Contact

☎ | 400-999-6126

✉ | cn.market@abclonal.com.cn

🌐 | www.abclonal.com.cn

Product Information

Source

Rabbit

Isotype

IgG

Purification

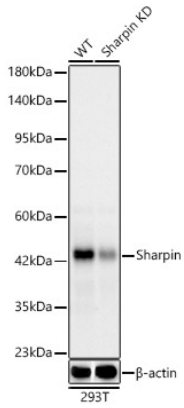
Affinity purification

Storage

Store at -20°C. Avoid freeze / thaw cycles.

Buffer: PBS containing 50% glycerol and 0.05% BSA, preserved with proclin300 or sodium azide (as specified on the Certificate of Analysis), pH 7.3.

Validation Data



Western blot analysis of lysates from wild type (WT) and Sharpin knockdown (KD) 293T cells, using [KD Validated] Sharpin Rabbit mAb (A24809) at 1:1000 dilution.

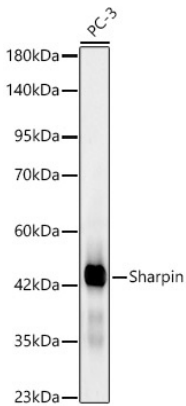
Secondary antibody: HRP-conjugated Goat anti-Rabbit IgG (H+L) (AS014) at 1:10000 dilution.

Lysates/proteins: 25ug per lane.

Blocking buffer: 3% nonfat dry milk in TBST.

Detection: ECL Basic Kit (RM00020).

Exposure time: 30s.



Western blot analysis of lysates from PC-3 cells, using [KD Validated] Sharpin Rabbit mAb (A24809) at 1:1000 dilution.

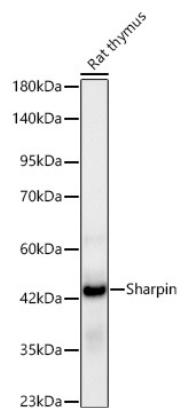
Secondary antibody: HRP-conjugated Goat anti-Rabbit IgG (H+L) (AS014) at 1:10000 dilution.

Lysates/proteins: 25ug per lane.

Blocking buffer: 3% nonfat dry milk in TBST.

Detection: ECL Basic Kit (RM00020).

Exposure time: 30s.



Western blot analysis of lysates from Rat thymus, using [KD Validated] Sharpin Rabbit mAb (A24809) at 1:1000 dilution.

Secondary antibody: HRP-conjugated Goat anti-Rabbit IgG (H+L) (AS014) at 1:10000 dilution.

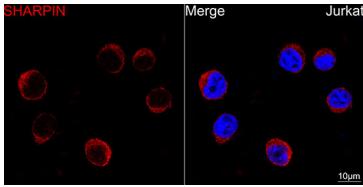
Lysates/proteins: 25ug per lane.

Blocking buffer: 3% nonfat dry milk in TBST.

Detection: ECL Basic Kit (RM00020).

Exposure time: 90s.

Validation Data



Confocal imaging of Jurkat cells using [KD Validated] Sharpin Rabbit mAb (A24809, dilution 1:200) followed by a further incubation with Cy3 Goat Anti-Rabbit IgG (H+L) (AS007, dilution 1:500) (Red). DAPI was used for nuclear staining (blue). Objective: 100x.