

# CD355/CRTAM Rabbit mAb

Catalog No.: A24807 **Recombinant**

## Basic Information

### Observed MW

66 kDa/80 kDa

### Calculated MW

22 kDa/44 kDa

### Category

Primary antibody

### Applications

WB,IF/ICC,FC,ELISA

### Cross-Reactivity

Human

### CloneNo number

ARC63867

## Background

The CRTAM gene is upregulated in CD4 (see MIM 186940)-positive and CD8 (see CD8A; MIM 186910)-positive T cells and encodes a type I transmembrane protein with V and C1-like Ig domains (Yeh et al., 2008 [PubMed 18329370]).

## Recommended Dilutions

**WB** 1:1000 - 1:4000

**IF/ICC** 1:200 - 1:400

**FC** 1:100 - 1:500

**ELISA** Recommended starting concentration is 1 µg/mL. Please optimize the concentration based on your specific assay requirements.

## Immunogen Information

### Gene ID

56253

### Swiss Prot

O95727

### Immunogen

Recombinant protein (or fragment). This information is considered to be commercially sensitive.

### Synonyms

CD355; CD355/CRTAM

## Contact

☎ | 400-999-6126

✉ | [cn.market@abclonal.com.cn](mailto:cn.market@abclonal.com.cn)

🌐 | [www.abclonal.com.cn](http://www.abclonal.com.cn)

## Product Information

### Source

Rabbit

### Isotype

IgG

### Purification

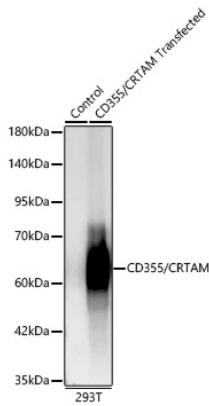
Affinity purification

### Storage

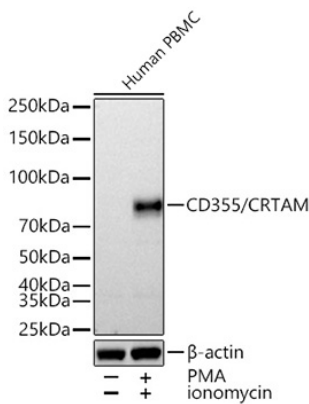
Store at -20°C. Avoid freeze / thaw cycles.

Buffer: PBS containing 50% glycerol and 0.05% BSA, preserved with proclin300 or sodium azide (as specified on the Certificate of Analysis), pH 7.3.

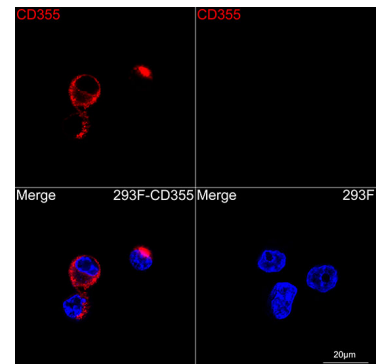
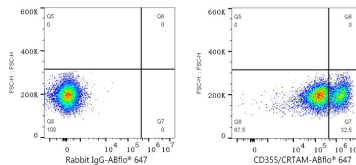
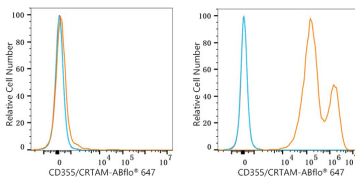
## Validation Data



Western blot analysis of lysates from wild type (WT) and 293T transfected with CD355/CRTAM, using CD355/CRTAM Rabbit mAb (A24807) at 1:2000 dilution.  
 Secondary antibody: HRP-conjugated Goat anti-Rabbit IgG (H+L) (AS014) at 1:10000 dilution..  
 Lysates/proteins: 25µg per lane.  
 Blocking buffer: 3% nonfat dry milk in TBST.  
 Detection: ECL Basic Kit (RM00020).  
 Exposure time: 30 s.



Western blot analysis of lysates from Human PBMC using CD355/CRTAM Rabbit mAb (A24807) at 1:1000 dilution incubated at room temperature for 1.5 hours. PBMC were treated with PMA (40 nM) and ionomycin (2 nM) for 18 hours.  
 Secondary antibody: HRP-conjugated Goat anti-Rabbit IgG (H+L) (AS014) at 1:10000 dilution.  
 Lysates/proteins: 30 µg per lane.  
 Blocking buffer: 3% nonfat dry milk in TBST.  
 Detection: ECL Basic Kit (RM00020).  
 Exposure time: 90 s.



Flow cytometry:  $1 \times 10^6$  293T cells (negative control, left) and 293T (Transfection, right) cells were surface-stained with CD355/CRTAM Rabbit mAb (A24807, 2 µg/mL, orange line) or ABflo® 647 Rabbit IgG isotype control (A22070, 5 µl/Test, blue line), followed by Alexa Fluor® 647 conjugated goat anti-rabbit pAb staining. Non-fluorescently stained cells were used as blank control (red line).

Flow cytometry:  $1 \times 10^6$  293T (Transfection) cells were surface-stained with ABflo® 647 Rabbit IgG isotype control (A22070, 5 µl/Test, left) or CD355/CRTAM Rabbit mAb (A24807, 2 µg/mL, right).

Confocal imaging of 293F cells transfected with CD355/CRTAM using CD355/CRTAM Rabbit mAb (A24807, dilution 1:200) followed by incubation with Cy3 Goat Anti-Rabbit IgG (H+L) (AS007, dilution 1:500) (Red). DAPI was used for nuclear staining (blue). Objective: 100x.