

APC Rabbit anti-Human/Monkey CD8a mAb

Catalog No.: A24799

1 Publications

Basic Information

Observed MW

Refer to figures

Calculated MW

21kDa/25kDa/30kDa

Category

Primary antibody

Applications

FC

Cross-Reactivity

Human, Cynomolgus

CloneNo number

ARC55248

Conjugate

APC. Ex:650nm. Em:660nm.

Recommended Dilutions

FC 5 µl per 10⁶ cells in
100 µl volume

Background

The CD8 antigen is a cell surface glycoprotein found on most cytotoxic T lymphocytes that mediates efficient cell-cell interactions within the immune system. The CD8 antigen acts as a coreceptor with the T-cell receptor on the T lymphocyte to recognize antigens displayed by an antigen presenting cell in the context of class I MHC molecules. The coreceptor functions as either a homodimer composed of two alpha chains or as a heterodimer composed of one alpha and one beta chain. Both alpha and beta chains share significant homology to immunoglobulin variable light chains. This gene encodes the CD8 alpha chain. Multiple transcript variants encoding different isoforms have been found for this gene.

Immunogen Information

Gene ID

925

Swiss Prot

P01732

Immunogen

Recombinant protein (or fragment). This information is considered to be commercially sensitive.

Synonyms

CD8A; CD8; Leu2; MAL; p32; CD8a molecule

Contact

☎ | 400-999-6126

✉ | cn.market@abclonal.com.cn

🌐 | www.abclonal.com.cn

Product Information

Source

Rabbit

Isotype

IgG

Purification

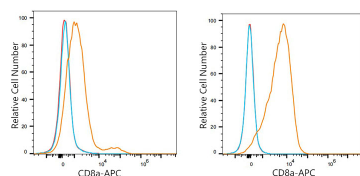
Affinity purification

Storage

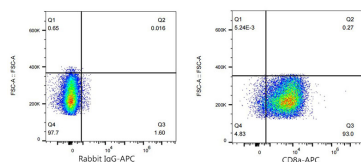
Store at 2-8°C. Avoid freeze.

Buffer: PBS containing 0.2% BSA, preserved with proclin300 or sodium azide (as specified on the Certificate of Analysis), pH 7.3.

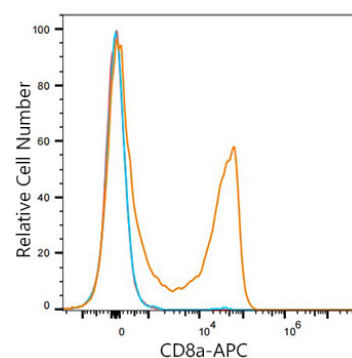
Validation Data



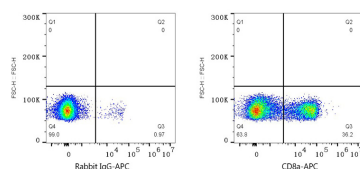
Flow cytometry: 1×10^6 293F cells (negative control, left) and MOLT-4 cells (right) were surface-stained with APC Rabbit anti-Human/Monkey CD8a mAb (A24799, 5 µl/Test, orange line) or APC Rabbit IgG isotype control (5 µl/Test, blue line). Non-fluorescently stained cells were used as blank control (red line).



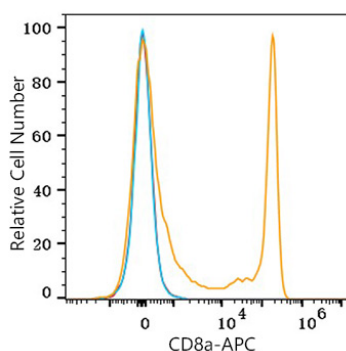
Flow cytometry: 1×10^6 MOLT-4 cells were surface-stained with APC Rabbit IgG isotype control (5 µl/Test, left) or APC Rabbit anti-Human/Monkey CD8a mAb (A24799, 5 µl/Test, right).



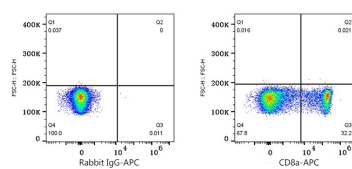
Flow cytometry: 1×10^6 Cynomolgus PBMC were surface-stained with APC Rabbit anti-Human/Monkey CD8a mAb (A24799, 5 µl/Test, orange line) or APC Rabbit IgG isotype control (5 µl/Test, blue line). Non-fluorescently stained cells were used as blank control (red line).



Flow cytometry: 1×10^6 Cynomolgus PBMC were surface-stained with APC Rabbit IgG isotype control (5 µl/Test, left) or APC Rabbit anti-Human/Monkey CD8a mAb (A24799, 5 µl/Test, right).



Flow cytometry: 1×10^6 Human PBMC were surface-stained with APC Rabbit anti-Human/Monkey CD8a mAb (A24799, 5 µl/Test, orange line) or APC Rabbit IgG isotype control (A24173, 5 µl/Test, blue line). Non-fluorescently stained cells were used as blank control (red line). Cells in the lymphocyte gate were used for analysis.



Flow cytometry: 1×10^6 Human PBMC were surface-stained with APC Rabbit IgG isotype control (A24173, 5 µl/Test, left) or APC Rabbit anti-Human/Monkey CD8a mAb (A24799, 5 µl/Test, right). Cells in the lymphocyte gate were used for analysis.