

PE Rabbit anti-Human CD244/2B4 mAb

Catalog No.: A24797

Basic Information

Observed MW

Refer to figures

Calculated MW

30kDa/36kDa/41kDa

Category

Primary antibody

Applications

FC

Cross-Reactivity

Human

CloneNo number

ARC61963

Conjugate

PE. Ex:565nm. Em:574nm.

Recommended Dilutions

FC 5 μ l per 10^6 cells in
100 μ l volume

Background

This gene encodes a cell surface receptor expressed on natural killer (NK) cells (and some T cells) that mediate non-major histocompatibility complex (MHC) restricted killing. The interaction between NK-cell and target cells via this receptor is thought to modulate NK-cell cytolytic activity. Alternatively spliced transcript variants encoding different isoforms have been found for this gene.

Immunogen Information

Gene ID

51744

Swiss Prot

Q9BZW8

Immunogen

Recombinant protein (or fragment). This information is considered to be commercially sensitive.

Synonyms

CD244; 2B4; NAIL; NKR2B4; Nmrk; SLAMF4; CD244 molecule

Contact

 | 400-999-6126

 | cn.market@abclonal.com.cn

 | www.abclonal.com.cn

Product Information

Source

Rabbit

Isotype

IgG

Purification

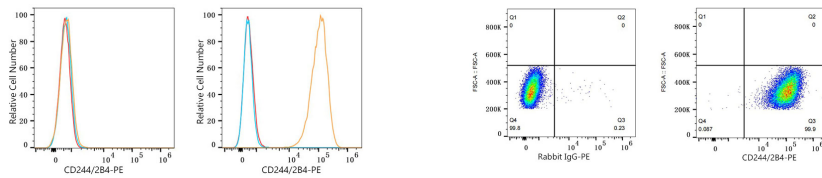
Affinity purification

Storage

Store at 2-8°C. Avoid freeze / thaw cycles.

Buffer: PBS containing 0.2% BSA, preserved with proclin300 or sodium azide (as specified on the Certificate of Analysis), pH 7.3.

Validation Data



Flow cytometry: 1×10^6 K-562 cells (negative control, left) and HEL cells (right) were surface-stained with PE Rabbit anti-Human CD244/2B4 mAb (A24797, 5 μ l/Test, orange line) or PE Rabbit IgG isotype control (5 μ l/Test, blue line). Non-fluorescently stained cells were used as blank control (red line).

Flow cytometry: 1×10^6 HEL cells were surface-stained with PE Rabbit IgG isotype control (5 μ l/Test, left) or PE Rabbit anti-Human CD244/2B4 mAb (A24797, 5 μ l/Test, right).