

TOMM40L Rabbit pAb

Catalog No.: A24771

Basic Information

Observed MW

34kDa

Calculated MW

33kDa

Category

Primary antibody

Applications

WB, ELISA

Cross-Reactivity

Mouse

Background

Predicted to enable protein transmembrane transporter activity. Predicted to be involved in protein import into mitochondrial matrix. Part of protein-containing complex.

Recommended Dilutions

WB 1:1000 - 1:5000

ELISA Recommended starting concentration is 1 µg/mL. Please optimize the concentration based on your specific assay requirements.

Immunogen Information

Gene ID

84134

Swiss Prot

Q969M1

Immunogen

Synthetic peptide. This information is considered to be commercially sensitive.

Synonyms

TOMM40B; TOMM40L

Contact

☎ | 400-999-6126

✉ | cn.market@abclonal.com.cn

🌐 | www.abclonal.com.cn

Product Information

Source

Rabbit

Isotype

IgG

Purification

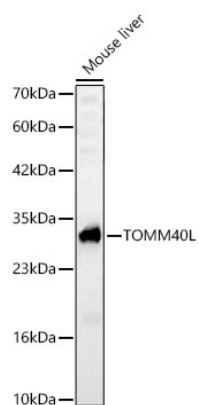
Affinity purification

Storage

Store at -20°C. Avoid freeze / thaw cycles.

Buffer: PBS containing 50% glycerol, preserved with proclin300 or sodium azide (as specified on the Certificate of Analysis), pH 7.3.

Validation Data



Western blot analysis of lysates from Mouse liver using TOMM40L Rabbit pAb (A24771) at 1:2000 dilution.
Secondary antibody: HRP-conjugated Goat anti-Rabbit IgG (H+L) (AS014) at 1:10000 dilution.
Lysates/proteins: 25 µg per lane.
Blocking buffer: 3% nonfat dry milk in TBST.
Detection: ECL Basic Kit (RM00020).
Exposure time: 90s.