

# MRPL15 Rabbit pAb

**Catalog No.: A24770**

## Basic Information

**Observed MW**

35kDa

**Calculated MW**

33kDa

**Category**

Primary antibody

**Applications**

WB, ELISA

**Cross-Reactivity**

Human, Mouse, Rat

## Background

Mammalian mitochondrial ribosomal proteins are encoded by nuclear genes and help in protein synthesis within the mitochondrion. Mitochondrial ribosomes (mitoribosomes) consist of a small 28S subunit and a large 39S subunit. They have an estimated 75% protein to rRNA composition compared to prokaryotic ribosomes, where this ratio is reversed. Another difference between mammalian mitoribosomes and prokaryotic ribosomes is that the latter contain a 5S rRNA. Among different species, the proteins comprising the mitoribosome differ greatly in sequence, and sometimes in biochemical properties, which prevents easy recognition by sequence homology. This gene encodes a 39S subunit protein that belongs to the Ecol15 ribosomal protein family. A pseudogene corresponding to this gene is found on chromosome 15q.

## Recommended Dilutions

**WB** 1:1000 - 1:5000**ELISA** Recommended starting concentration is 1 µg/mL. Please optimize the concentration based on your specific assay requirements.

## Immunogen Information

**Gene ID**

29088

**Swiss Prot**

Q9P015

**Immunogen**

Synthetic peptide. This information is considered to be commercially sensitive.

**Synonyms**

MRPL15; HSPC145; L15mt; MRP-L15; MRP-L7; RPML7; mitochondrial ribosomal protein L15

## Contact

 | 400-999-6126 | [cn.market@abclonal.com.cn](mailto:cn.market@abclonal.com.cn) | [www.abclonal.com.cn](http://www.abclonal.com.cn)

## Product Information

**Source**

Rabbit

**Isotype**

IgG

**Purification**

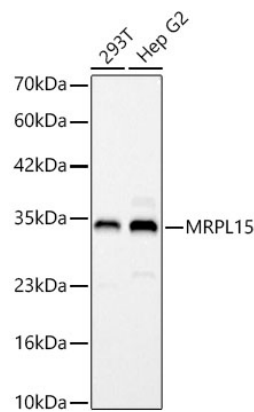
Affinity purification

**Storage**

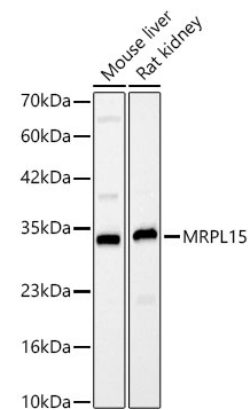
Store at -20°C. Avoid freeze / thaw cycles.

Buffer: PBS containing 50% glycerol, preserved with proclin300 or sodium azide (as specified on the Certificate of Analysis), pH 7.3.

Validation Data



Western blot analysis of various lysates using MRPL15 Rabbit pAb (A24770) at 1:2000 dilution.  
Secondary antibody: HRP-conjugated Goat anti-Rabbit IgG (H+L) (AS014) at 1:10000 dilution.  
Lysates / proteins: 25 µg per lane.  
Blocking buffer: 3 % nonfat dry milk in TBST.  
Detection: ECL Basic Kit (RM00020).  
Exposure time: 30s.



Western blot analysis of various lysates using MRPL15 Rabbit pAb (A24770) at 1:2000 dilution.  
Secondary antibody: HRP-conjugated Goat anti-Rabbit IgG (H+L) (AS014) at 1:10000 dilution.  
Lysates / proteins: 25 µg per lane.  
Blocking buffer: 3 % nonfat dry milk in TBST.  
Detection: ECL Basic Kit (RM00020).  
Exposure time: 90s.