

# [KD Validated] CD98/SLC3A2 Rabbit mAb

Catalog No.: A24735 **Recombinant**

## Basic Information

### Observed MW

75-120kDa

### Calculated MW

57kDa/61kDa/67kDa/68kDa/71kDa

### Category

Primary antibody

### Applications

WB, IF/ICC, FC, ELISA

### Cross-Reactivity

Human

### CloneNo number

ARC64397

## Background

This gene is a member of the solute carrier family and encodes a cell surface, transmembrane protein. The protein exists as the heavy chain of a heterodimer, covalently bound through di-sulfide bonds to one of several possible light chains. The encoded transporter plays a role in regulation of intracellular calcium levels and transports L-type amino acids. Alternatively spliced transcript variants, encoding different isoforms, have been characterized.

## Recommended Dilutions

**WB** 1:1000 - 1:4000**IF/ICC** 1:200 - 1:2000**FC** 1:500 - 1:1000

**ELISA** Recommended starting concentration is 1 µg/mL. Please optimize the concentration based on your specific assay requirements.

## Immunogen Information

### Gene ID

6520

### Swiss Prot

P08195

### Immunogen

Recombinant protein (or fragment). This information is considered to be commercially sensitive.

### Synonyms

4F2; CD98; MDU1; 4F2HC; 4T2HC; NACAE; CD98HC; CD98/SLC3A2

## Contact

 | 400-999-6126 | [cn.market@abclonal.com.cn](mailto:cn.market@abclonal.com.cn) | [www.abclonal.com.cn](http://www.abclonal.com.cn)

## Product Information

### Source

Rabbit

### Isotype

IgG

### Purification

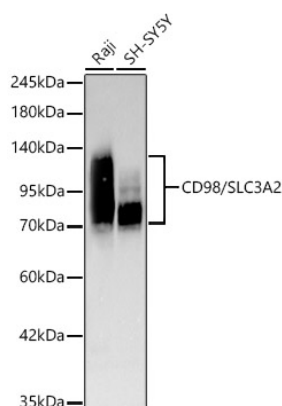
Affinity purification

### Storage

Store at -20°C. Avoid freeze / thaw cycles.

Buffer: PBS containing 50% glycerol and 0.05% BSA, preserved with proclin300 or sodium azide (as specified on the Certificate of Analysis), pH 7.3.

## Validation Data



Western blot analysis of various lysates, using [KD Validated] CD98/SLC3A2 Rabbit mAb (A24735) at 1:1000 dilution.

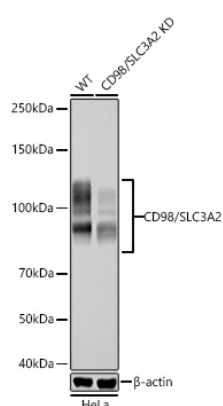
Secondary antibody: HRP-conjugated Goat anti-Rabbit IgG (H+L) (AS014) at 1:10000 dilution.

Lysates/proteins: 25µg per lane.

Blocking buffer: 3% nonfat dry milk in TBST.

Detection: ECL Basic Kit (RM00020).

Exposure time: 45s.



Western blot analysis of lysates from wild type (WT) and CD98/SLC3A2 knockdown (KD) HeLa cells using [KD Validated] CD98/SLC3A2 Rabbit mAb (A24735) at 1:1000 dilution incubated overnight at 4°C.

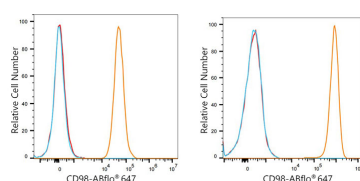
Secondary antibody: HRP-conjugated Goat anti-Rabbit IgG (H+L) (AS014) at 1:10000 dilution.

Lysates/proteins: 25 µg per lane.

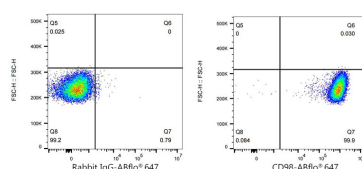
Blocking buffer: 3% nonfat dry milk in TBST.

Detection: ECL Basic Kit (RM00020).

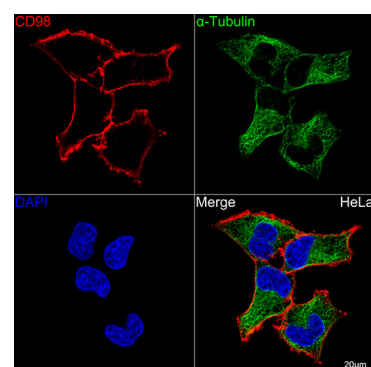
Exposure time: 15s.



Flow cytometry:  $1 \times 10^6$  SH-SY5Y cells (Low Expression, left) and HeLa cells (right) were surface-stained with CD98/SLC3A2 Rabbit mAb (A24735, 2 µg/mL, orange line) or ABflo® 647 Rabbit IgG isotype control (A22070, 5 µl/Test, blue line), followed by Alexa Fluor® 647 conjugated goat anti-rabbit pAb staining. Non-fluorescently stained cells were used as blank control (red line).



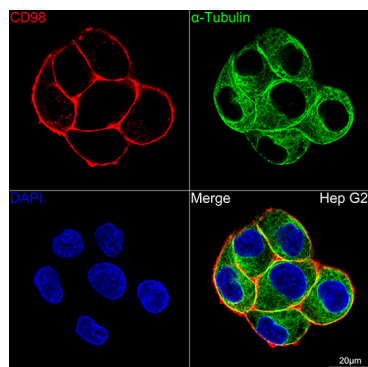
Flow cytometry:  $1 \times 10^6$  HeLa cells were surface-stained with ABflo® 647 Rabbit IgG isotype control (A22070, 5 µl/Test, left) or CD98/SLC3A2 Rabbit mAb (A24735, 2 µg/mL, right).



Confocal imaging of HeLa cells using [KD Validated] CD98/SLC3A2 Rabbit mAb (A24735, dilution 1:200) followed by a further incubation with Cy3-conjugated Goat Anti-Rabbit IgG (H+L) (AS007, dilution 1:500) (Red). The cells were counterstained with α-Tubulin mAb (AC012, dilution 1:400) followed by incubation with ABflo® 488-conjugated Goat Anti-Mouse IgG (H+L) (AS076, dilution 1:500) (Green). DAPI was used for nuclear staining (blue). Objective: 100x.

## Validation Data

---



Confocal imaging of Hep G2 cells using [KD Validated] CD98/SLC3A2 Rabbit mAb (A24735, dilution 1:200) followed by a further incubation with Cy3-conjugated Goat Anti-Rabbit IgG (H+L) (AS007, dilution 1:500) (Red). The cells were counterstained with  $\alpha$ -Tubulin mAb (AC012, dilution 1:400) followed by incubation with ABflo® 488-conjugated Goat Anti-Mouse IgG (H+L) (AS076, dilution 1:500) (Green). DAPI was used for nuclear staining (blue). Objective: 100x.