

ABflo® 647 Rabbit anti-Human MERTK mAb

Catalog No.: A24728

Basic Information

Observed MW

Calculated MW

110kDa

Category

Primary antibody

Applications

FC

Cross-Reactivity

Human

CloneNo number

ARC63874

Conjugate

ABflo® 647. Ex:648nm. Em:664nm.

Background

This gene is a member of the MER/AXL/TYRO3 receptor kinase family and encodes a transmembrane protein with two fibronectin type-III domains, two Ig-like C2-type (immunoglobulin-like) domains, and one tyrosine kinase domain. Mutations in this gene have been associated with disruption of the retinal pigment epithelium (RPE) phagocytosis pathway and onset of autosomal recessive retinitis pigmentosa (RP).

Recommended Dilutions

FC 5 µl per 10⁶ cells in
100 µl volume

Immunogen Information

Gene ID

10461

Swiss Prot

Q12866

Immunogen

Recombinant protein (or fragment). This information is considered to be commercially sensitive.

Synonyms

MERTK; MER; RP38; Tyro12; c-Eyk; c-mer; tyrosine-protein kinase Mer

Contact

☎ | 400-999-6126

✉ | cn.market@abclonal.com.cn

🌐 | www.abclonal.com.cn

Product Information

Source

Rabbit

Isotype

IgG

Purification

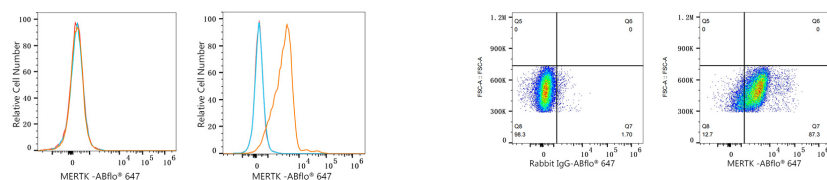
Affinity purification

Storage

Store at 2-8°C. Avoid freeze.

Buffer: PBS containing 0.2% BSA, preserved with proclin300 or sodium azide (as specified on the Certificate of Analysis), pH 7.3.

Validation Data



Flow cytometry: 1×10^6 HeLa cells (negative control, left) and 293T cells (right) were surface-stained with ABflo® 647 Rabbit anti-Human MERTK mAb (A24728, 5 μ l/Test, orange line) or ABflo® 647 Rabbit IgG isotype control (A22070, 5 μ l/Test, blue line). Non-fluorescently stained cells were used as blank control (red line).

Flow cytometry: 1×10^6 293T cells were surface-stained with ABflo® 647 Rabbit IgG isotype control (A22070, 5 μ l/Test, left) or ABflo® 647 Rabbit anti-Human MERTK mAb (A24728, 5 μ l/Test, right).