

CD4 Rabbit mAb

Catalog No.: A24719 **Recombinant**

Basic Information

Observed MW

55kDa

Calculated MW

51kDa

Category

Primary antibody

Applications

ELISA, WB, IP, FC

Cross-Reactivity

Mouse

CloneNo number

ARC64069

Background

Predicted to enable several functions, including interleukin-16 binding activity; interleukin-16 receptor activity; and protein homodimerization activity. Involved in helper T cell enhancement of adaptive immune response. Acts upstream of or within several processes, including defense response to Gram-negative bacterium; positive regulation of calcium-mediated signaling; and positive regulation of peptidyl-tyrosine phosphorylation. Located in endoplasmic reticulum; external side of plasma membrane; and membrane raft. Is expressed in several structures, including alimentary system; brain; genitourinary system; hemolymphoid system; and liver and biliary system. Used to study type 1 diabetes mellitus. Human ortholog(s) of this gene implicated in immunodeficiency 79. Orthologous to human CD4 (CD4 molecule).

Recommended Dilutions

WB 1:500 - 1:1000**IP** 0.5µg-4µg antibody for
400µg-600µg extracts of
whole cells**FC** 1:100 - 1:500

Immunogen Information

Gene ID

12504

Swiss Prot

P06332

Immunogen

Recombinant fusion protein containing a sequence corresponding to amino acids 27-394 of mouse CD4 (NP_038516.1).

Synonyms

L3T4; Ly-4; CD4

Contact

 | 400-999-6126 | cn.market@abclonal.com.cn | www.abclonal.com.cn

Product Information

Source

Rabbit

Isotype

IgG

Purification

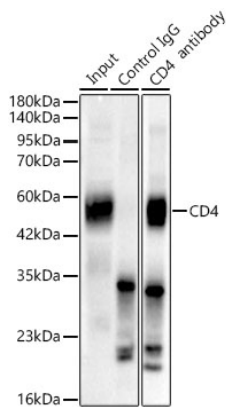
Affinity purification

Storage

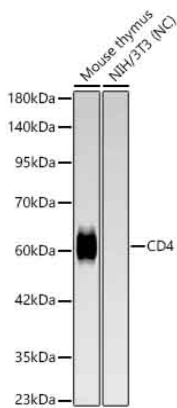
Store at -20°C. Avoid freeze / thaw cycles.

Buffer: PBS with 0.03% proclin300, 0.2% BSA, 50% glycerol, pH7.3.

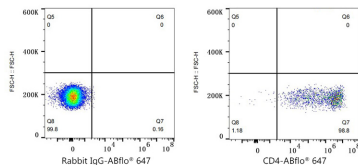
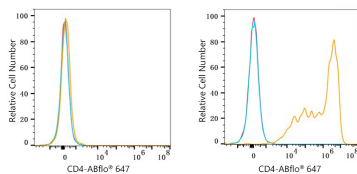
Validation Data



Immunoprecipitation analysis of 600ug extracts from Mouse thymus using 3ug CD4 Rabbit mAb (A24719 1:100). Western blot was performed from the immunoprecipitate using CD4 Rabbit mAb (A24719) at a dilution of 1:1000.



Western blot analysis of various lysates, using CD4 Rabbit mAb (A24719) at 1:1000 dilution. Secondary antibody: HRP Goat Anti-Rabbit IgG (H+L) (AS014) at 1:10000 dilution. Lysates/proteins: 25ug per lane. Blocking buffer: 3% nonfat dry milk in TBST. Detection: ECL Basic Kit (RM00020). Negative control (NC) :NIH/3T3 Exposure time: 180s.



Flow cytometry: 1X10⁶ 293T cells (negative control,left) and 293T (Transfection,right) cells were surface-stained with CD4 Rabbit mAb (A24719,2 µg/mL,orange line) or ABflo® 647 Rabbit IgG isotype control (A22070,2 µg/mL,blue line), followed by Alexa Fluor® 647 conjugated goat anti-rabbit pAb staining. Non-fluorescently stained cells were used as blank control (red line).

Flow cytometry: 1X10⁶ 293T (Transfection) cells were surface-stained with ABflo® 647 Rabbit IgG isotype control (A22070,2 µg/mL,left) or CD4 Rabbit mAb (A24719,2 µg/mL,right).