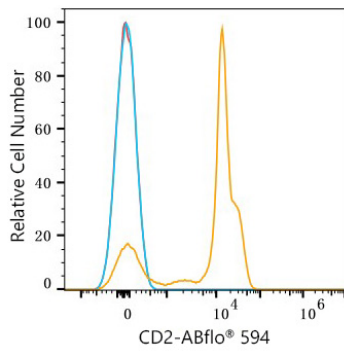




## Validation Data

---



Flow cytometry:  $1 \times 10^6$  Human PBMC were surface-stained with ABflo® 594 Rabbit anti-Human CD2 mAb (A24708, 5  $\mu$ l/Test, orange line) or ABflo® 594 Rabbit IgG isotype control (A23821, 5  $\mu$ l/Test, blue line). Non-fluorescently stained cells were used as blank control (red line). Cells in the lymphocyte gate were used for analysis.