

ABflo® 594 Rabbit anti-Human/Monkey IgM (FC) mAb

Catalog No.: A24696

Basic Information

Observed MW

Calculated MW

49kDa

Category

Primary antibody

Applications

IF/ICC,FC

Cross-Reactivity

Human, Cynomolgus

CloneNo number

ARC63173

Conjugate

ABflo® 594. Ex:588nm. Em:604nm.

Recommended Dilutions

IF/ICC 1:50-1:200

FC 5 µl per 10⁶ cells in
100 µl volume

Contact

☎ | 400-999-6126

✉ | cn.market@abclonal.com.cn

🌐 | www.abclonal.com.cn

Background

Immunoglobulins (Ig) are the antigen recognition molecules of B cells. An Ig molecule is made up of 2 identical heavy chains and 2 identical light chains (see MIM 147200) joined by disulfide bonds so that each heavy chain is linked to a light chain and the 2 heavy chains are linked together. Each Ig heavy chain has an N-terminal variable (V) region containing the antigen-binding site and a C-terminal constant (C) region, encoded by an individual C region gene, that determines the isotype of the antibody and provides effector or signaling functions. The heavy chain V region is encoded by 1 each of 3 types of genes: V genes (see MIM 147070), joining (J) genes (see MIM 147010), and diversity (D) genes (see MIM 146910). The C region genes are clustered downstream of the V region genes within the heavy chain locus on chromosome 14. The IGHM gene encodes the C region of the mu heavy chain, which defines the IgM isotype. Naive B cells express the transmembrane forms of IgM and IgD (see IGHD; MIM 1471770) on their surface. During an antibody response, activated B cells can switch to the expression of individual downstream heavy chain C region genes by a process of somatic recombination known as isotype switching. In addition, secreted Ig forms that act as antibodies can be produced by alternative RNA processing of the heavy chain C region sequences. Although the membrane forms of all Ig isotypes are monomeric, secreted IgM forms pentamers, and occasionally hexamers, in plasma (summary by Janeway et al., 2005).[supplied by OMIM, Aug 2010]

Immunogen Information

Gene ID

3507

Swiss Prot

P01871-1

Immunogen

Recombinant protein (or fragment). This information is considered to be commercially sensitive.

Synonyms

IGHM; AGM1; MU; VH; immunoglobulin heavy constant mu

Product Information

Source

Rabbit

Isotype

IgG

Purification

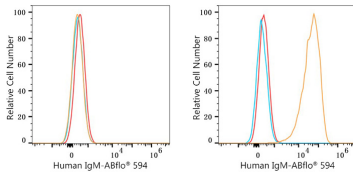
Affinity purification

Storage

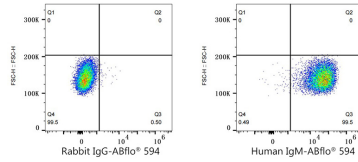
Store at 2-8°C. Avoid freeze.

Buffer: PBS containing 0.2% BSA, preserved with proclin300 or sodium azide (as specified on the Certificate of Analysis), pH 7.3.

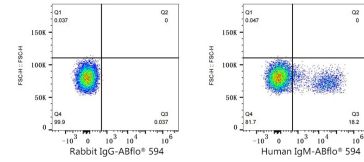
Validation Data



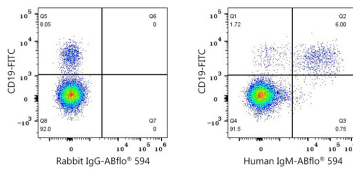
Flow cytometry: 1×10^6 Jurkat cells (negative control, left) and Daudi cells (right) were surface-stained with ABflo® 594 Rabbit anti-Human IgM mAb (A24696,5 $\mu\text{l}/\text{Test}$, orange line) or ABflo® 594 Rabbit IgG isotype control (A23821,5 $\mu\text{l}/\text{Test}$, blue line). Non-fluorescently stained cells were used as blank control (red line).



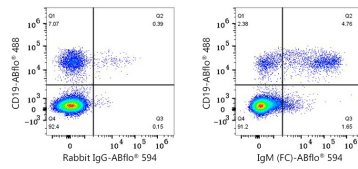
Flow cytometry: 1×10^6 Daudi cells were surface-stained with ABflo® 594 Rabbit IgG isotype control (A23821,5 $\mu\text{l}/\text{Test}$, left) or ABflo® 594 Rabbit anti-Human IgM mAb (A24696,5 $\mu\text{l}/\text{Test}$, right).



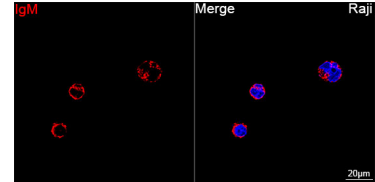
Flow cytometry: 1×10^6 Human PBMC were surface-stained with ABflo® 594 Rabbit IgG isotype control (A23821,5 $\mu\text{l}/\text{Test}$, left) or ABflo® 594 Rabbit anti-Human IgM mAb (A24696,5 $\mu\text{l}/\text{Test}$, right).



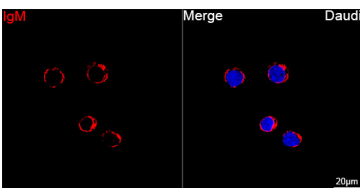
Flow cytometry: 1×10^6 Human PBMC were surface-stained with FITC Mouse anti-Human CD19 mAb (A22815,5 $\mu\text{l}/\text{Test}$) and ABflo® 594 Rabbit IgG isotype control (A23821,5 $\mu\text{l}/\text{Test}$, left) or ABflo® 594 Rabbit anti-Human IgM mAb (A24696,5 $\mu\text{l}/\text{Test}$, right). Cells in the lymphocyte gate were used for analysis.



Flow cytometry: 1×10^6 Cynomolgus PBMC were surface-stained with ABflo® 488 Rabbit anti-Human/Monkey CD19 mAb (A23008,5 $\mu\text{l}/\text{Test}$) and ABflo® 594 Rabbit IgG isotype control (A23821,5 $\mu\text{l}/\text{Test}$, left) or ABflo® 594 Rabbit anti-Human/Monkey IgM (FC) mAb (A24696,5 $\mu\text{l}/\text{Test}$, right). Cells in the lymphocyte gate were used for analysis.



Confocal imaging of Raji cells using ABflo® 594 Rabbit anti-Human IgM mAb (A24696, dilution 1:100). DAPI was used for nuclear staining (Blue). Objective: 100x.



Confocal imaging of Daudi cells using ABflo® 594 Rabbit anti-Human IgM mAb (A24696, dilution 1:100). DAPI was used for nuclear staining (Blue). Objective: 100x.