

HSL/LIPE Rabbit mAb

Catalog No.: A24689

Recombinant

3 Publications

Basic Information

Observed MW

83kDa

Calculated MW

117kDa

Category

Primary antibody

Applications

WB,IF/ICC,ELISA

Cross-Reactivity

Human, Mouse

CloneNo number

ARC64016

Background

The protein encoded by this gene has a long and a short form, generated by use of alternative translational start codons. The long form is expressed in steroidogenic tissues such as testis, where it converts cholesteryl esters to free cholesterol for steroid hormone production. The short form is expressed in adipose tissue, among others, where it hydrolyzes stored triglycerides to free fatty acids.

Recommended Dilutions

WB 1:8000 - 1:32000

IF/ICC 1:50 - 1:200

ELISA Recommended starting concentration is 1 µg/mL. Please optimize the concentration based on your specific assay requirements.

Immunogen Information

Gene ID

3991

Swiss Prot

Q05469

Immunogen

Synthetic peptide. This information is considered to be commercially sensitive.

Synonyms

HSL; LHS; REH; AOMS4; FPLD6; HSL/LIPE

Contact

☎ | 400-999-6126

✉ | cn.market@abclonal.com.cn

🌐 | www.abclonal.com.cn

Product Information

Source

Rabbit

Isotype

IgG

Purification

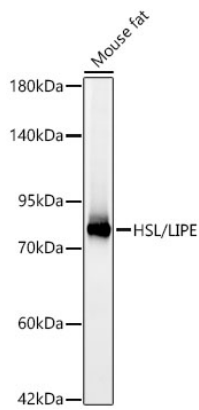
Affinity purification

Storage

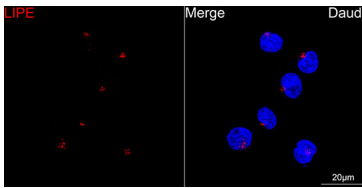
Store at -20°C. Avoid freeze / thaw cycles.

Buffer: PBS containing 50% glycerol and 0.05% BSA, preserved with proclin300 or sodium azide (as specified on the Certificate of Analysis), pH 7.3.

Validation Data



Western blot analysis of extracts from mouse fat, using HSL/LIPE Rabbit mAb (A24689) at 1:8000 dilution.
Secondary antibody: HRP Goat Anti-Rabbit IgG (H+L) (AS014) at 1:10000 dilution.
Lysates/proteins: 25ug per lane.
Blocking buffer: 3% nonfat dry milk in TBST.
Detection: ECL Basic Kit (RM00020).
Exposure time: 10s.



Confocal imaging of Daudi cells using HSL/LIPE Rabbit mAb (A24689, at dilution of 1:200) (Red). DAPI was used for nuclear staining (blue). Objective: 100x.