

# ABflo® 488 Rabbit anti-Human CD185/CXCR5 mAb

Catalog No.: A24676

## Basic Information

### Observed MW

### Calculated MW

42kDa

### Category

Primary antibody

### Applications

FC

### Cross-Reactivity

Human

### CloneNo number

ARC62172

### Conjugate

ABflo® 488. Ex:491nm. Em:516nm.

## Recommended Dilutions

FC 5 µl per 10<sup>6</sup> cells in  
100 µl volume

## Background

This gene encodes a multi-pass membrane protein that belongs to the CXC chemokine receptor family. It is expressed in mature B-cells and Burkitt's lymphoma. This cytokine receptor binds to B-lymphocyte chemoattractant (BLC), and is involved in B-cell migration into B-cell follicles of spleen and Peyer patches. Alternatively spliced transcript variants encoding different isoforms have been described for this gene.

## Immunogen Information

### Gene ID

643

### Swiss Prot

P32302

### Immunogen

Recombinant protein (or fragment). This information is considered to be commercially sensitive.

### Synonyms

BLR1; CD185; MDR15

## Contact

☎ | 400-999-6126

✉ | [cn.market@abclonal.com.cn](mailto:cn.market@abclonal.com.cn)

🌐 | [www.abclonal.com.cn](http://www.abclonal.com.cn)

## Product Information

### Source

Rabbit

### Isotype

IgG

### Purification

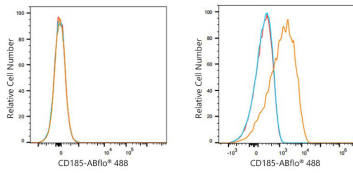
Affinity purification

### Storage

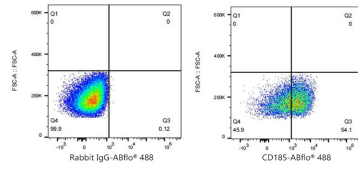
Store at 2-8°C. Avoid freeze.

Buffer: PBS containing 0.2% BSA, preserved with proclin300 or sodium azide (as specified on the Certificate of Analysis), pH 7.3.

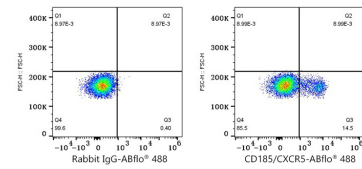
## Validation Data



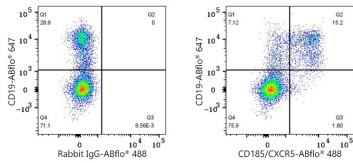
Flow cytometry:  $1 \times 10^6$  HeLa cells (negative control, left) and Daudi cells (right) were surface-stained with ABflo® 488 Rabbit anti-Human CD185/CXCR5 mAb (A24676,5  $\mu\text{l}/\text{Test}$ , orange line) or ABflo® 488 Rabbit IgG isotype control (A22069,5  $\mu\text{l}/\text{Test}$ , blue line). Non-fluorescently stained cells were used as blank control (red line).



Flow cytometry:  $1 \times 10^6$  Daudi cells were surface-stained with ABflo® 488 Rabbit IgG isotype control (A22069,5  $\mu\text{l}/\text{Test}$ , left) or ABflo® 488 Rabbit anti-Human CD185/CXCR5 mAb (A24676,5  $\mu\text{l}/\text{Test}$ , right).



Flow cytometry:  $1 \times 10^6$  Human PBMC were surface-stained with ABflo® 488 Rabbit IgG isotype control (A22069,5  $\mu\text{l}/\text{Test}$ , left) or ABflo® 488 Rabbit anti-Human CD185/CXCR5 mAb (A24676,5  $\mu\text{l}/\text{Test}$ , right).



Flow cytometry:  $1 \times 10^6$  Human PBMC were surface-stained with ABflo® 647 Mouse anti-Human CD19 mAb (5  $\mu\text{l}/\text{Test}$ ) and ABflo® 488 Rabbit IgG isotype control (A22069,5  $\mu\text{l}/\text{Test}$ , left) or ABflo® 488 Rabbit anti-Human CD185/CXCR5 mAb (A24676,5  $\mu\text{l}/\text{Test}$ , right). Cells in the lymphocyte gate were used for analysis.